

THE ORIGINAL  
**MORRIS & Co**

160<sup>TH</sup> ANNIVERSARY



COMPILATION  
DESIGN BOOK



THE ORIGINAL  
**MORRIS & Co.**

160<sup>TH</sup> ANNIVERSARY



Discover 160 years of iconic pattern from Morris & Co., with a hand chosen selection of loved fabrics and wallpapers alongside a stunning new design.

Beloved by all for their compelling scenes of nature, unforgettable patterns, and timely nostalgia, Morris & Co. is proud to present a gathering of favourite works to mark 160 years of timeless design. On this anniversary, we pay homage to William Morris's remarkable creative talents with the release of a brand-new wallpaper panel, Owl & Willow.

Rebecca Craig, head of design for Morris & Co. says, "Over 160 years, Morris & Co., like its founder William Morris, has had an incredible reach, proving influential in so many areas of art and design. From examining the bold vision of designs from the fledgling 19th century company, to understanding its continued relevance for interior design today, arranging this special anniversary collection for Morris & Co. has been a delight."

As we chart the decades from feature walls to pattern clashes across 42 fabrics and 67 wallpapers, it's joyous to see Morris's legacy live on. We're bridging generations and creating a coming together of those whose paths may never normally cross, but for whom William Morris holds a special place in their hearts, enabling freedom of expression and an enduring sense of style.



# THROUGH THE YEARS...

---

As a political theorist, publisher, environmental campaigner and poet, William Morris (1834–1896) was one of the greatest figures of the nineteenth century. His most enduring legacy, however, belongs to the realm of interior design, where his company came to be known as the leading light of the Arts & Crafts movement.

Founded in 1861 as Morris, Marshall, Faulkner & Co., the company set out to do no less than revolutionise Victorian aesthetic sensibility. Inspired by medieval craftsmanship and offering beautifully hand-crafted products for the home, Morris & Co. presented a bold challenge to the age of mass-production ushered in by the Industrial Revolution. Morris & Co., as it was renamed in 1875, soon rose to prominence as a fabric and wallpaper manufacturer of the highest quality, relying upon traditional printing techniques and original renditions of native British flora and fauna.

At Morris & Co. today, we use original archival documents to faithfully reproduce William Morris's cherished designs. Making considered adaptations to reach new audiences, we retain Morris's high regard for impeccable craftsmanship and incredible eye for timeless pattern.



# AN EVOLUTION IN DESIGN

View the evolution of the unmistakable Morris & Co. style through ten iconic designs.



Fruit  
1864



Snakeshead  
1876



Brer Rabbit  
1881

\* Design Hero



Willow Boughs  
1887



Golden Lily  
c.1899

Pimpernel  
1876



\* Design Hero

Chrsyanthemum  
1877



Strawberry Thief  
1883



Blackthorn  
1892



\* Design Hero

Morris Seaweed  
1901



# WILLOW BOUGHS

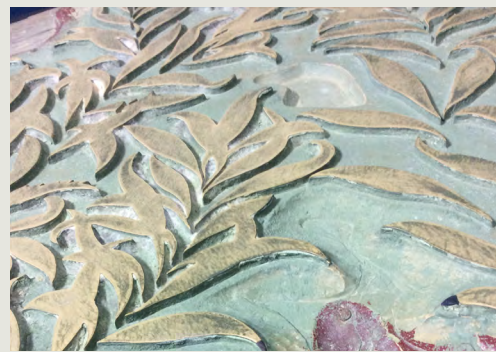
## DESIGN HERO

Willow Boughs, originally designed by William Morris in 1887, is the perfect expression of its creator's love of nature and the English countryside. In 1881, Morris gave a lecture in which he argued that patterns should always retain an "unmistakable suggestion of gardens and fields".

As a visual motif, the willow was an enduring source of inspiration for Morris, appearing as the background in many earlier designs and even being the subject of Willow from 1874. Willow Boughs, compared to the Willow design which predates it by thirteen years, is more intricate in its depiction of intertwining stems and gently overlapping leaves, conjuring a real sense of bucolic harmony. As an indication of Morris's swooning love for natural forms, there is no better example than Willow Boughs.



@alicegraceinteriors



@calliannejayne1



@nighunt

# BLACKTHORN

## DESIGN HERO

Blackthorn, thought to be designed by J.H. Dearle for Morris & Co. in 1892, is a radiant depiction of the blackthorn tree. Known in folklore as the 'Mother of the Woods', the blackthorn is famed for its full crop of sloe berries in the autumn and fearsome barbs and austere appearance in the winter. For his pattern, Dearle draws upon the rich folkloric heritage of the blackthorn to produce a pattern with abundant colour and intrigue, representing the tree's bright white blossoms and accompanying daisies against a background of deepest green. A densely-packed pattern, Blackthorn also features hawthorn leaves, and is typical of Morris & Co.'s tendency to draw inspiration directly from the English countryside.



# PIMPERNEL

## DESIGN HERO

Pimpernel, designed by William Morris in 1876, is a near symmetrical design describing the delicate pimpernel flower against a rhythmic base of swirling tendrils. Displaying a dramatic vigour, Pimpernel is a typical design from this period of Morris & Co.'s output, in particular for its use of oversized flower heads to create a compelling three-dimensionality. Exemplifying another key stylistic trend in Morris & Co.'s portfolio, Pimpernel translates its designer's fascination for tapestry into wallpaper, creating a truly compelling painterly depth. Morris himself was so taken by Pimpernel that it was the feature design in the dining room of his own Kelmscott Manor, in London.



@tarkett\_sverige



@jazzabelle



@stilreda



@sict.in



OWL AND WILLOW  
NEW FOR SS21





# OWL AND WILLOW

---

NEW FOR SS21

Created to celebrate the 160th anniversary of Morris & Co., charming wildlife, stylised trees and delicate florals combine in this enchanting scene.

---

## HANGING INSTRUCTIONS

This design is made up of three 300cm high drops of wallpaper, supplied and printed as one continuous roll measuring 68.5cm in width. The individual drops are indicated by a cut line for ease of hanging.

This wallcovering is printed digitally onto a non-woven base, which is strong and flexible, allowing the wall to be pasted rather than the substrate itself.

The wallcovering can be tailored to room height by removing any excess from the top and / or bottom of each length.

To achieve the best result we recommend the use of a professional decorator experienced in hanging wide width papers.



# FABRIC OVERVIEW

---

Bamboo  
226720

Bamboo  
226687

Blackthorn  
226707

Bluebell  
226721

Bramble  
226716

Bramble  
226724

Brer Rabbit  
226714

Forest  
226696

Forest  
226705

Forest  
226711

Fruit Minor  
226704

Golden Lily  
226702

Kelmscott Tree  
226697

Kelmscott Tree  
237206

Kelmscott Tree  
226686

Lodden  
226691

Marigold  
226695

Marigold  
226698

Marigold  
226715

Marigold  
226718

Marigold  
226725

Mary Isobel  
226690

Morris Seaweed  
226727

Orchard  
226706

Orchard  
226688

Pimpernel  
226712

Pimpernel  
226700

Rosehip  
226692

Snakeshead  
226726

Snakeshead  
226717

Snakeshead  
226694

# FABRIC OVERVIEW

---

Strawberry Thief  
226719

Strawberry Thief  
226685

Strawberry Thief  
226713

Strawberry Thief  
226701

Strawberry Thief  
226693

The Brook Tapestry  
226699

The Brook Tapestry  
226709

The Brook Tapestry  
226708

Willow Boughs  
226722

Willow Boughs  
226703



# WALLPAPER OVERVIEW

---



Arbutus 216809	Artichoke 216850	Bachelors Button 216824	Bird & Pomegranate 216815	Bird & Pomegranate 216820	Bird & Pomegranate 216841	Bird & Pomegranate 216867	Blackthorn 216857
Bramble 216811	Chrysanthemum 216823	Chrysanthemum 216854	Chrysanthemum 216860	Chrysanthemum Toile 216861	Daisy 216838	Fruit 216819	Fruit 216840
Fruit 216859	Golden Lily 216816	Golden Lily 216818	Golden Lily 216834	Golden Lily 216853	Golden Lily 216858	Golden Lily 216869	Honeysuckle & Tulip 216827
Honeysuckle 216842	Jasmine 216808	Leicester 216864	Marigold 216810	Marigold 216832	Marigold 216837	Marigold 216844	Mary Isobel 216839

# WALLPAPER OVERVIEW

---

Mary Isobel  
216843

Meadow Sweet  
216829

Montreal  
216862

Morris Bellflowers  
216806

Morris Seaweed  
216825

Morris Seaweed  
216848

Morris Seaweed  
216851

Morris Seaweed  
216865

Owen Jones  
216855

Pimpernel  
216845

Pimpernel  
216852

Pimpernel  
216856

Pink & Rose  
216836

Scroll  
216831

Snakeshead  
216812

Snakeshead  
216822

Snakeshead  
216828

Snakeshead  
216847

Snakeshead  
216863

Snakeshead  
216870

Standen  
216833

Strawberry Thief  
216804

Strawberry Thief  
216848

Strawberry Thief  
216868

The Brook  
216813

The Brook Linen  
216821

Wandle  
216805

Wandle  
216826

Wandle  
216849

Willow Bough Minor  
216814

Willow Boughs  
216807

Willow Boughs  
216866

## WALLPAPER OVERVIEW

---

Willow  
216817

Willow  
216830

Willow  
216835

Owl & Willow  
217055

## CONTACT INFORMATION

---

### Sanderson Design Group Showroom

Design Centre Chelsea Harbour, First Floor, South Dome,  
Lots Road, London, SW10 0XE  
Tel: +44 (0)20 3903 3700  
Email: [showroom@sandersondesigngroup.com](mailto:showroom@sandersondesigngroup.com)

### Sanderson Design Group Showroom

Chalfont House, Oxford Road, Denham, UB9 4DX  
Tel: +44 (0)20 3457 5862

### Press Office

Chalfont House, Oxford Road, Denham, UB9 4DX  
Tel: +44 (0)20 3457 5862

### For further information:

[morriscandco.sandersondesigngroup.com](http://morriscandco.sandersondesigngroup.com)

### To find your nearest stockist:

[morriscandco.sandersondesigngroup.com/find-a-retailer](http://morriscandco.sandersondesigngroup.com/find-a-retailer)