

# CLARKE & CLARKE

## ESPECTRO WEAVES







# CLARKE & CLARKE

## ESPECTRO WEAVES

---

**Espectro – meaning spectrum – explores the interplay of colour, form and tactility through woven structure. In Clarke & Clarke’s newest woven fabric collection, Espectro Weaves, versatile designs reflecting subtle architectural influences come to life in a spectrum of colour mixes and distinct textures.**

---

Each design brings a distinct personality. Atrio’s jacquard quality and metallic thread enhance its subtle two-tone effect, while Camino’s chevron stripes echo winding roads in flecked, variegated yarn. Muro and Zocalo lean into organic forms with soft shimmers and tonal depth. This texture across the collection creates a beautifully detailed look, layering across the portfolio for another sophisticated addition to interior design schemes.

There’s playfulness too. Rambla and Sotano introduce movement through dashes and spots, while Torre’s diamond repeat nods to classical symmetry while retaining a contemporary feel overall.

An impactful Espectro palette is made up of soft, warm hues that dabble in midnights and teals as well as spaced notes. Multicoloured yarns explore the breadth of applications for some designs, while metallic accents in the yarns create an elevated finish.

United by dual-purpose practicality and lively spirit, Espectro Weaves brings architectural influence into the interior with softness, structure and imagination.

[clarke-clarke.sandersondesigngroup.com](http://clarke-clarke.sandersondesigngroup.com)

[@clarke\\_clarke\\_interiors](https://www.instagram.com/clarke_clarke_interiors)





THE DESIGNS



## ATRIO

A tactile jacquard weave with ribbed detailing and digitally printed colour, Atrio has a beautiful two-tone and textural quality. A light domestic design, Atrio is suitable for drapes and more.



ATRIO

F1815/04



MURO

F1801/01



TORRE

F1804/01



CAMINO

F1800/01

Click on the product images to discover more.





# ATRIO



F1815/01



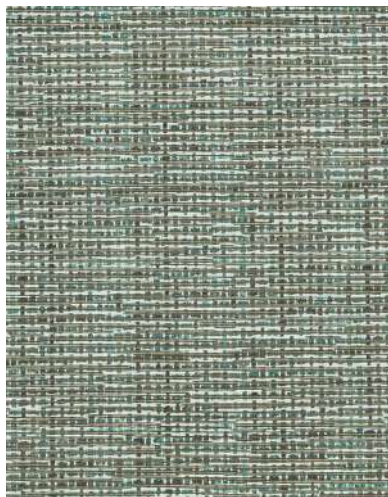
F1815/02



F1815/03



F1815/04



F1815/05

Click on the product images to discover more.

## FABRIC

TYPE	Weave
COMPOSITION	53% Polyester, 21% Cotton, 25% Viscose, 1% Acrylic
WIDTH	142cm/55.9in
REPEAT	14cm/5.5in
PATTERN MATCH	Straight Match
DOMESTIC USAGE	Curtains, Blinds, Cushions, Upholstery
CONTRACT USAGE	Curtains

# MURO

An organic jacquard weave with subtle shimmer and contrast between form and texture, Muro evokes artistic, timeworn Spanish walls – bold yet quietly expressive.



F1801/01



F1801/02



F1801/03



F1801/04

Click on the product images to discover more.

## FABRIC

TYPE	Weave
COMPOSITION	46% Polyester, 39% Cotton, 13% Acrylic, 1% Polyamide, 1% Lurex
WIDTH	140.5cm/55.3in
REPEAT	35cm/13.8in
PATTERN MATCH	Straight Match
DOMESTIC USAGE	Curtains, Blinds, Cushions, Upholstery
CONTRACT USAGE	Curtains



# TORRE

A refined diamond motif in mottled yarns, Torre draws its strength from the vertical – grounded and graceful, with a nod to the Spanish architectural grandeur.



F1804/01



F1804/02



F1804/03



F1804/04



F1804/05



F1804/06

Click on the product images to discover more.

## FABRIC

TYPE	Weave
COMPOSITION	75% Polyester, 25% Cotton
WIDTH	137cm/53.9in
REPEAT	7cm/2.8in
PATTERN MATCH	Straight Match
DOMESTIC USAGE	Curtains, Blinds, Cushions, Upholstery
CONTRACT USAGE	Upholstery, Curtains

# CAMINO

Flecked with linen and woven with variegated yarn, Camino is a dual-purpose spirited chevron stripe that recalls winding Spanish roads and shifting horizons.



F1800/01



F1800/02



F1800/03



F1800/04



F1800/05

Click on the product images to discover more.

## FABRIC

TYPE	Weave
COMPOSITION	86.5% Polyester, 9.5% Cotton, 4% Linen
WIDTH	137cm/53.9in
REPEAT	14cm/5.5in
PATTERN MATCH	Straight Match
DOMESTIC USAGE	Curtains, Blinds, Cushions, Upholstery
CONTRACT USAGE	Curtains



## SOTANO

Spotted with playful specks and woven in variegated yarns, Sotano brings a light-hearted but weighted feel to upholstery and drapes.



SOTANO

F1803/02



ZOCCALO

F1805/01



ZOCCALO

F1805/06



TORRE

F1805/06

Click on the product images to discover more.





# SOTANO



F1803/01



F1803/02



F1803/03



F1803/04



F1803/05



F1803/06

## FABRIC

TYPE	Weave
COMPOSITION	92% Polyester, 7% Cotton, 1% Linen
WIDTH	137cm/53.9in
REPEAT	1cm/0.4in
PATTERN MATCH	Straight Match
DOMESTIC USAGE	Curtains, Blinds, Cushions, Upholstery
CONTRACT USAGE	Upholstery, Curtains

Click on the product images to discover more.



## ZOCALO

Richly tactile and grounded in earthy tones, Zocalo's bobbled surface is alive with contrast and rhythm.  
An abstract, organic movement of colour and texture, Zocalo adds an artistic feel to any space.



F1805/01



F1805/02



F1805/03



F1805/04



F1805/05



F1805/06

### FABRIC

TYPE	Weave
COMPOSITION	35% Polyester, 25% Viscose, 25% Acrylic, 15% Cotton
WIDTH	141.50cm/55.7in
REPEAT	35.50cm/14.0in
PATTERN MATCH	Straight Match
DOMESTIC USAGE	Curtains, Blinds, Cushions, Upholstery
CONTRACT USAGE	Upholstery, Curtains

Click on the product images to discover more.



---

## RAMBLA

---

A lively dash motif skips across a natural ground, scattered in multicoloured yarns. Rambla is full of movement and charm – like the famous Spanish promenades it's named after.



F1802/01



F1802/02



F1802/03



F1802/04



F1802/05

Click on the product images to discover more.

---

### FABRIC

TYPE	Weave
COMPOSITION	87% Polyester, 13% Linen
WIDTH	137cm/53.9in
REPEAT	34.0cm/13.4in
PATTERN MATCH	Straight Match
DOMESTIC USAGE	Curtains, Blinds, Cushions, Upholstery
CONTRACT USAGE	Upholstery, Curtains







## ESPECTRO WEAVES



ATRIO F1815/01



ATRIO F1815/02



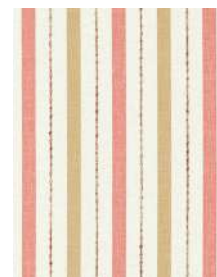
ATRIO F1815/03



ATRIO F1815/04



ATRIO F1815/05



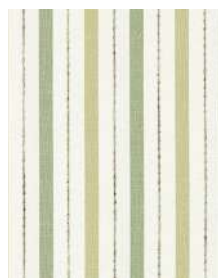
CAMINO F1800/01



CAMINO F1800/02



CAMINO F1800/03



CAMINO F1800/04



CAMINO F1800/05



MURO F1801/01



MURO F1801/02



MURO F1801/03



MURO F1801/04



RAMBLA F1802/01



RAMBLA F1802/02



RAMBLA F1802/03



RAMBLA F1802/04



RAMBLA F1802/05



SOTANO F1803/01



SOTANO F1803/02



SOTANO F1803/03



SOTANO F1803/04



SOTANO F1803/05

Click on the product images to discover more.



ESPECTRO WEAVES



SOTANO F1803/06



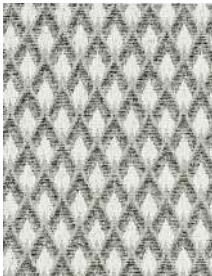
TORRE F1804/01



TORRE F1804/02



TORRE F1804/03



TORRE F1804/04



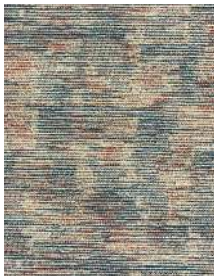
TORRE F1804/05



TORRE F1804/06



ZOCCALO F1805/01



ZOCCALO F1805/02



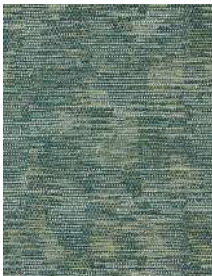
ZOCCALO F1805/03



ZOCCALO F1805/04



ZOCCALO F1805/05



ZOCCALO F1805/06

Click on the product images to discover more.





## CONTACT US

---

### LONDON SHOWROOM – NEW

Sanderson Design Group  
Unit 23G, Ground Floor, Central Dome,  
Chelsea Harbour Design Centre  
SW10 0XE, London  
[showroom@sandersondesigngroup.com](mailto:showroom@sandersondesigngroup.com)

### USA – KRAVET PRESS

[press@kravet.com](mailto:press@kravet.com)

### GERMANY SHOWROOM

Kronenstrasse 4, 76133 Karlsruhe  
+49 721 981 985 60  
[verkauf@sandersondesigngroup.com](mailto:verkauf@sandersondesigngroup.com)

### NETHERLANDS SHOWROOM

ETC Licht & Interieur, Randweg 20,  
4104 AC Culemborg  
+31 65349 3696  
[international@sandersondesigngroup.com](mailto:international@sandersondesigngroup.com)

## ABOUT CLARKE & CLARKE

---

Founded in 2009 as the go-to design house defining transitional style in home interiors, Clarke & Clarke offers an eclectic yet distinctive collection of fabrics, wallpapers and home accessories. Born out of a passion for creating beautiful, expressive homes, Clarke & Clarke's spirit and British flair deliver an inclusive sense of glamour for the style conscious. Focusing on luxurious textures and bold colour combinations, Clarke & Clarke's aesthetic runs from whimsical to glamorous and maximalist to sleek, for polished looks embodying British eclecticism.

[clarke-clarke.sandersondesigngroup.com](http://clarke-clarke.sandersondesigngroup.com)

[@clarke\\_clarke\\_interiors](https://www.instagram.com/clarke_clarke_interiors)