

HARLEQUIN

DEFINED MOMENTUM

DIGITAL DESIGN BOOK



HARLEQUIN

DEFINED MOMENTUM



INSPIRED BY THE EARTH'S NATURAL FORMS AND THE ARTISTIC PATTERNING THAT EMERGES FROM NATURE, DEFINED MOMENTUM IS A DISTINCT, ULTRA-VERSATILE FABRIC AND WALLPAPER COLLECTION FOR AW25.

Defined Momentum offers versatility in interiors, striking a transitional yet elevated note across fabric and wallpaper. A finely curated palette and highly textured designs come together to reflect the beauty of natural sedimentation in contemporary design.

A synergy of modern art and the natural beauty of the earth's form plays out, with designs hand-painted in the studio in a bespoke colour palette, mirroring the organic flow of nature and resulting in an effortless yet expressive palette.

Special hand-selected yarns have been woven with intricate techniques for an outstanding collection of weaves that perfectly suit modern interiors. Fabrics designed and curated for this collection offer a sleek look with a mix of matt and shine for layering.

ALL DESIGNS ARE CREATED IN THE HARLEQUIN DESIGN STUDIO. ALL PRINTED FABRIC AND WALLPAPER IS PRODUCED AT THE BRAND'S HISTORIC UK FACTORIES IN LOUGHBOROUGH AND LANCASTER.

www.harlequin.design
[@harlequinfw](https://www.instagram.com/harlequinfw)





BRAND STORY

EXPRESSIVE DESIGNS AND CURATED PALETTES
THROUGH LUXURY FABRIC AND WALLPAPER.

Harlequin is a contemporary brand of creative integrity known for designing and making versatile, sophisticated, and expressive fabric and wallpaper. As a studio, Harlequin embraces an eclectic sense of style in interiors and empowers people to express their individuality through colour and design in their homes.

Founded in the 1960s, Harlequin's portfolio is a varied and exciting mix of techniques, artistic styles, and textures, culminating in a library of beautiful, transitional designs. Taking inspiration from contemporary art and global influences, richly layered designs are revealed, providing endless inspiration for modern-day interiors that revel in self-expression.

With a refined approach to palette curation, the design team considers every shade and tone, hand-drawing and painting each design as an artwork before transforming them into highly textured fabrics and luxurious wallpapers that ignite the senses.

Our intuition for how people desire to live drives the team to create visionary designs as a creative outlet for design expression at home.

From a considered yet versatile library of hues to exceptional techniques and finishes in products, our designs bring energy to interiors, building an artwork archive for the future. Harlequin is committed to embracing individuality in design, bringing originality and beauty to the design table.







ALTAR

Altar is a jacquard design in three heavenly colourways. Designed to reflect small, layered rocks, this zig-zag design is contemporary with a heavyweight feel to the fabric for added luxury.



ALTAR 134693



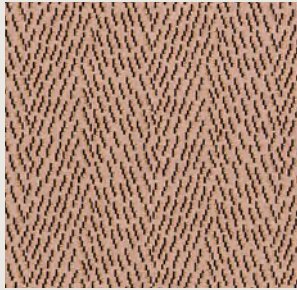
CHACO 113312



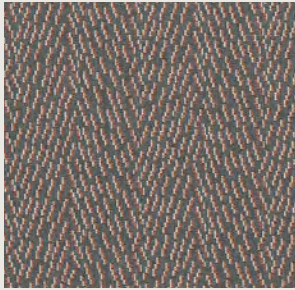
ELIASSON 134697

[CLICK ON THE PRODUCT IMAGES TO DISCOVER MORE](#)

ALTAR FABRIC COLOURWAYS



134690



134691



134693

CLICK ON THE PRODUCT IMAGES TO DISCOVER MORE

ALTAR FABRIC TECHNICAL

TYPE	Fabric
COMPOSITION	48% Polyester, 45% Recycled Polyester, 7% Cotton
WIDTH	136cm/53.5in
REPEAT	22.2cm/8.7in
PATTERN MATCH	Straight
DOMESTIC USAGE	Upholstery, Drapes, Blinds, Cushions
CONTRACT USAGE	Drapes



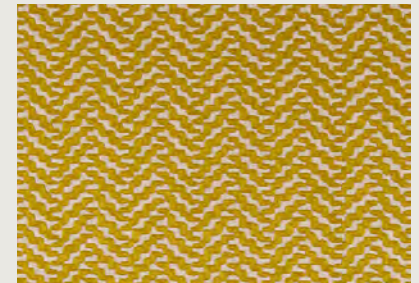
CARTOGRAPHY

An all-over embroidery on a draped ground, Cartography weaves in a fancy yarn for movement in the fabric. This all-over pattern creates the illusion of abstract hill tops.

GO WITHS



CARTOGRAPHY 134716



THICKET 134718



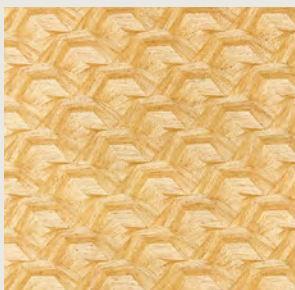
MOLTEN 134753

CLICK ON THE PRODUCT IMAGES TO DISCOVER MORE

CARTOGRAPHY FABRIC COLOURWAYS



134715



134716



134717

CLICK ON THE PRODUCT IMAGES TO DISCOVER MORE

FABRIC TECHNICAL

TYPE	Fabric
COMPOSITION	48% Viscose 29% Polyester 26% Cotton
WIDTH	137cm/53.9in
REPEAT	23.5cm/9.3in
PATTERN MATCH	Straight
DOMESTIC USAGE	Drapes, Blinds, Cushions
CONTRACT USAGE	Drapes



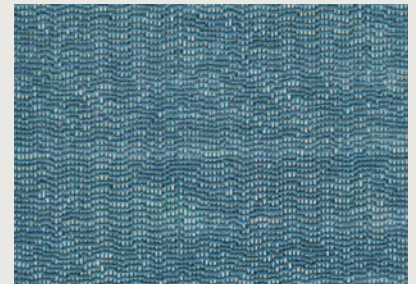
CHACO

Chaco has the appeal of an ombré design in this horizontal stripe, a favourite style of Harlequin. Simple yet effective, the design was painted initially onto silk before being translated as wallpaper on vinyl and embossed to mimic fabric.

GO WITHS



CHACO 113312



CHERT 134741



CHERT 134744

[CLICK ON THE PRODUCT IMAGES TO DISCOVER MORE](#)

CHACO WALLPAPER COLOURWAYS



113310



113311



113312



113313



113314

CLICK ON THE PRODUCT IMAGES TO DISCOVER MORE

WALLPAPER TECHNICAL

TYPE	Wallpaper
COMPOSITION	Vinyl
WIDTH	68.6cm/27in
REPEAT	30.6cm/12in
PATTERN MATCH	Straight Match

CHACO FABRIC COLOURWAYS



134708



134709



134710

CLICK ON THE PRODUCT IMAGES TO DISCOVER MORE

FABRIC TECHNICAL

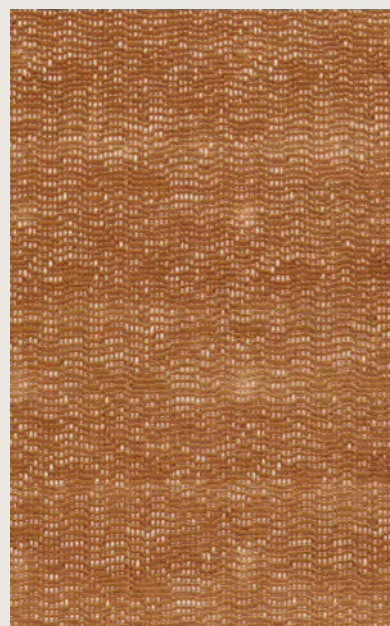
TYPE	Fabric
COMPOSITION	56% Polyester 37% Cotton 7% Linen
WIDTH	139.5cm/54.9in
REPEAT	31.0cm/12.2in
PATTERN MATCH	Straight
DOMESTIC USAGE	Drapes, Blinds, Cushions
CONTRACT USAGE	Drapes



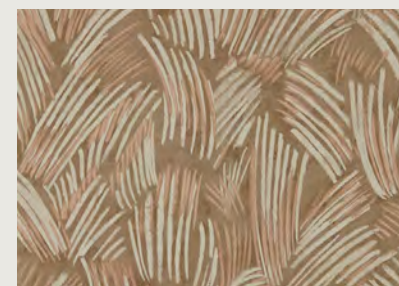
CHERT

This dry cotton velvet gives a layered sediment look, organic and natural yet with a slight structure to the flow.

GO WITHS



CHERT 134743



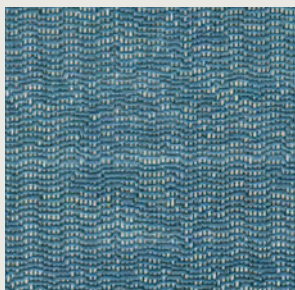
GLYPH 113300



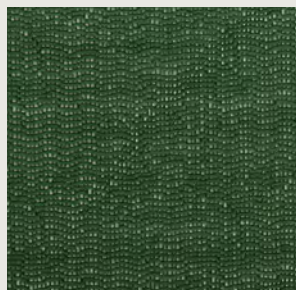
MONOLITH 134684

CLICK ON THE PRODUCT IMAGES TO DISCOVER MORE

CHERT FABRIC COLOURWAYS



134741



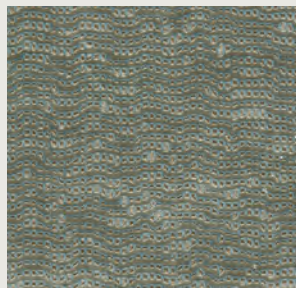
134742



134743



134744



134745

CLICK ON THE PRODUCT IMAGES TO DISCOVER MORE

FABRIC TECHNICAL

TYPE	Velvet
COMPOSITION	86% Cotton 14% Polyester
WIDTH	143cm/56.3in
REPEAT	32.5cm/12.8in
PATTERN MATCH	Straight
DOMESTIC USAGE	Upholstery, Drapes, Blinds, Cushions
CONTRACT USAGE	Upholstery, Drapes



CRATER

Created in the studio on a suede ground, Crater was designed by masking areas, then using a sponge to create a relief effect in a large-scale geometric pattern. Stony tones suit this vinyl design.

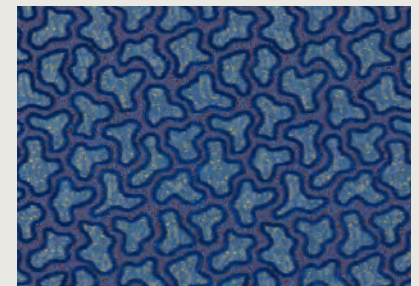
GO WITHS



CRATER 113326



THICKET 134718



MOLTEN 134753

CLICK ON THE PRODUCT IMAGES TO DISCOVER MORE

CRATER WALLPAPERS COLOURWAYS



113324



113325



113326

CLICK ON THE PRODUCT IMAGES TO DISCOVER MORE

WALLPAPERS TECHNICAL

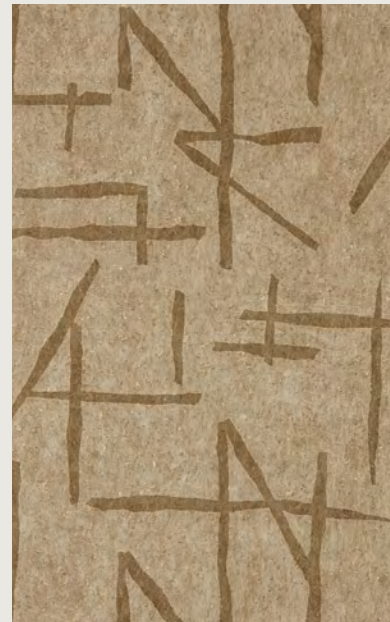
TYPE	Wallpaper
COMPOSITION	Vinyl
WIDTH	68.6cm/27in
REPEAT	89.9cm/35.4in
PATTERN MATCH	Half Drop



DOLMENS

Dolmens was created in the studio, initially on a cork ground. Our designers played with masking areas and all-over sponging for layers and textures, which have been printed with an emboss to elevate the textural elements of the design in wallpaper. For the Dolmens Velvet, the Japanese line style has been designed on a smaller scale. A storytelling piece, the soft matt texture juxtaposes the smart finish.

GO WITHS



DOLMENS I13330



CHACO I34708



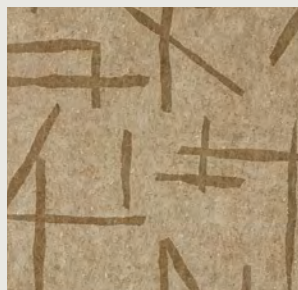
KIVA I34706

CLICK ON THE PRODUCT IMAGES TO DISCOVER MORE

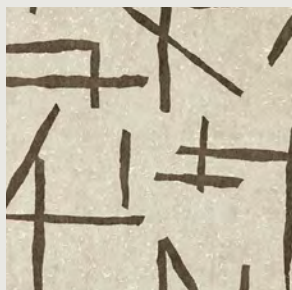
DOLMENS WALLPAPER COLOURWAYS



113329



113330



113331

CLICK ON THE PRODUCT IMAGES TO DISCOVER MORE

WALLPAPER TECHNICAL

TYPE	Wallpaper
COMPOSITION	Vinyl
WIDTH	68.6cm/27in
REPEAT	83.3cm/33in
PATTERN MATCH	Half Drop

DOLMENS FABRIC COLOURWAYS



134746



134747



134748



134749



134750



134751

CLICK ON THE PRODUCT IMAGES TO DISCOVER MORE

FABRIC TECHNICAL

TYPE	Velvet
COMPOSITION	73% Cotton 21% Polyester 6% Viscose
WIDTH	141cm/55.5in
REPEAT	43.0cm/16.9in
PATTERN MATCH	Straight
DOMESTIC USAGE	Upholstery, Drapes, Blinds, Cushions
CONTRACT USAGE	Upholstery, Drapes



ELIASSON

Named after the Icelandic-Danish artist, known for his sculptural work, Eliasson is a transitional jacquard with a lovely movement that picks up on the light in interiors.

GO WITHS



ELIASSON 134695



FRESCOES 113291



MOLTEN 134727

CLICK ON THE PRODUCT IMAGES TO DISCOVER MORE

ELIASSEN FABRIC COLOURWAYS



134695



134696



134697

CLICK ON THE PRODUCT IMAGES TO DISCOVER MORE

FABRIC TECHNICAL

TYPE	Fabric
COMPOSITION	56% Polyester 21% Cotton, 9% Acrylic 7% Viscose, 7% Linen
WIDTH	130cm/51.2in
REPEAT	42.7cm/16.8in
PATTERN MATCH	Straight
DOMESTIC USAGE	Upholstery, Drapes, Blinds, Cushions
CONTRACT USAGE	Drapes



EROSION

This delicate, wood-effect jacquard imitates silk in its soft sheen for a lovely finish. Unassuming and luxurious yet contemporary.

GO WITHS



EROSION 134724



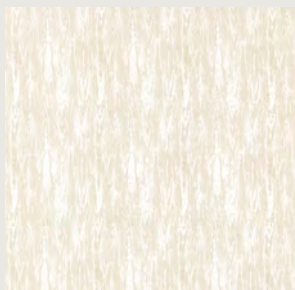
DOLMENS VELVET 134748



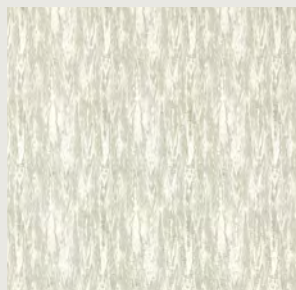
HIDE 113305

CLICK ON THE PRODUCT IMAGES TO DISCOVER MORE

EROSION FABRIC COLOURWAYS



134724



134725

CLICK ON THE PRODUCT IMAGES TO DISCOVER MORE

FABRIC TECHNICAL

TYPE	Fabric
COMPOSITION	69% Recycled Polyester 18% Cotton 13% Polyester
WIDTH	141cm/55.5in
REPEAT	29.5cm/11.6in
PATTERN MATCH	Straight
DOMESTIC USAGE	Upholstery, Drapes, Blinds, Cushions
CONTRACT USAGE	Drapes



FRESCOES

These four colourways were created in the studio using oil pastels onto suede ground. Simplistic curves and ashes make up the design in beautiful miniature detail.

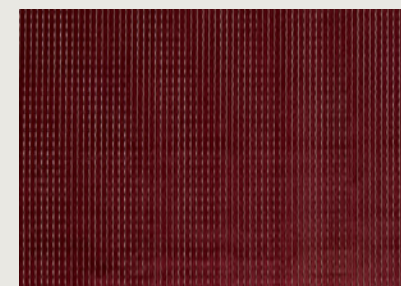
GO WITHS



FRESCOES 113291



DOLMENS VELVET 134746



KARST 134731

CLICK ON THE PRODUCT IMAGES TO DISCOVER MORE

FRESCOES WALLPAPER COLOURWAYS



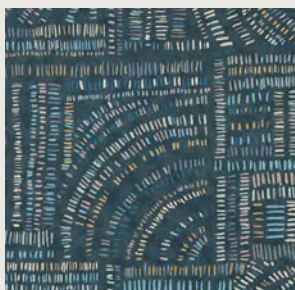
113291



113292



113294



113295

CLICK ON THE PRODUCT IMAGES TO DISCOVER MORE

WALLPAPER TECHNICAL

TYPE	Wallpaper
COMPOSITION	Non Woven
WIDTH	68.6cm/27in
REPEAT	79.9cm/31.5in
PATTERN MATCH	Half Drop



GLYPH

Designed in the studio and painted in oil pastels with a mix of paint, watercolour and sponge techniques onto a fabric suede ground, Glyph emerges with lovely movement, almost as if painted on a hide. The simple lines of this design create an all-over texture.

GO WITHS



GLYPH 113300



OCEANIC 134700



CHERT 134743

[CLICK ON THE PRODUCT IMAGES TO DISCOVER MORE](#)

GLYPH WALLPAPER COLOURWAYS



113300



113301



113302

CLICK ON THE PRODUCT IMAGES TO DISCOVER MORE

WALLPAPER TECHNICAL

TYPE	Wallpaper
COMPOSITION	Non Woven
WIDTH	68.6cm/27in
REPEAT	94.8cm/37.3in
PATTERN MATCH	Half Drop



HIDE

Hide is a simple yet effective design with in a mirror repeat, with a pattern like ostrich or crocodile skin for a sophisticated textural finish.

GO WITHS



HIDE 113305



MONOLITH 134687



DOLMENS VELVET 134749

CLICK ON THE PRODUCT IMAGES TO DISCOVER MORE

HIDE WALLPAPER COLOURWAYS



113303



113305

CLICK ON THE PRODUCT IMAGES TO DISCOVER MORE

WALLPAPER TECHNICAL

TYPE	Wallpaper
COMPOSITION	Non Woven
WIDTH	52cm/20.5in
REPEAT	71.9cm/28.3in
PATTERN MATCH	Straight Match



HOLLOW

Reminiscent of simple designs and markings, Hollow is embroidered in a maze-like pattern in a running cord stitch for texture and depth.

GO WITHS



HOLLOW 134723



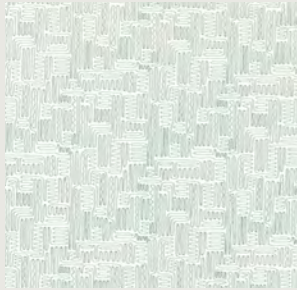
DOLMENS VELVET 134751



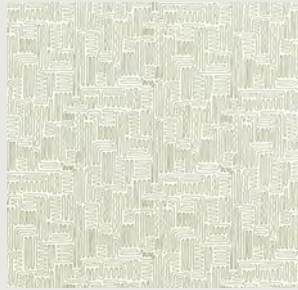
ELIASSON 134695

CLICK ON THE PRODUCT IMAGES TO DISCOVER MORE

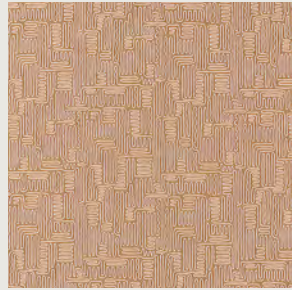
HOLLOW FABRIC COLOURWAYS



134721



134722



134723

CLICK ON THE PRODUCT IMAGES TO DISCOVER MORE

FABRIC TECHNICAL

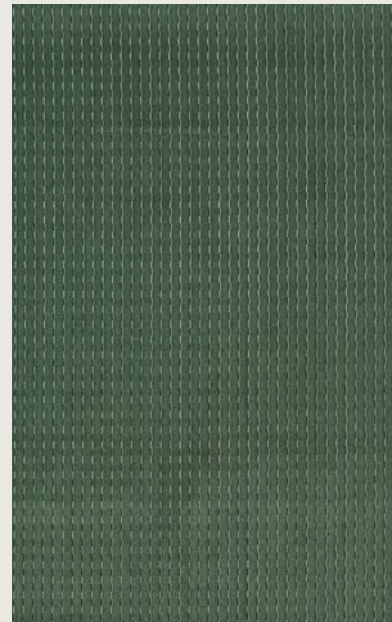
TYPE	Fabric
COMPOSITION	52% Polyester 48% Cotton
WIDTH	129.6cm/51in
REPEAT	46.1cm/18.1in
PATTERN MATCH	Straight
DOMESTIC USAGE	Upholstery, Drapes, Blinds, Cushions
CONTRACT USAGE	Drapes



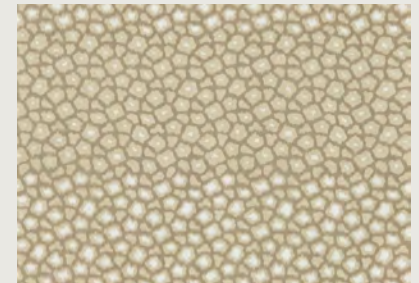
KARST

Karst is a velvet stripe with a slight silky sheen emanating from the satin background for a luxurious finish. With a 50,000 Martindale, this vertical stripe is a staple design for any designer's toolkit.

GO WITHS



KARST 134730



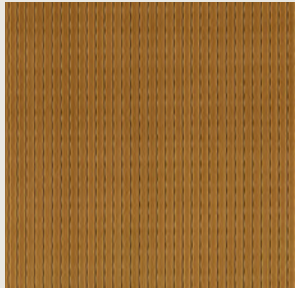
LOAM 113297



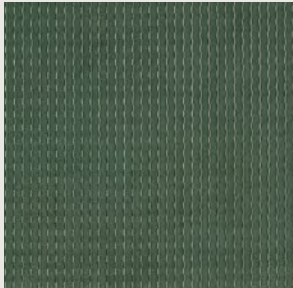
THICKET 134719

CLICK ON THE PRODUCT IMAGES TO DISCOVER MORE

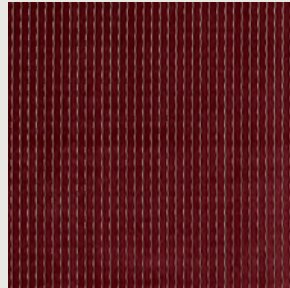
KARST FABRIC COLOURWAYS



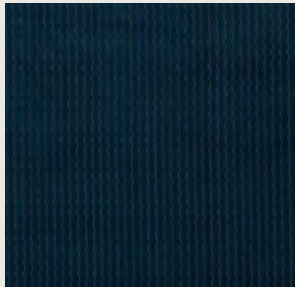
134729



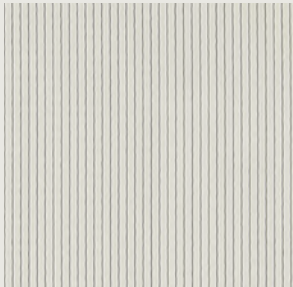
134730



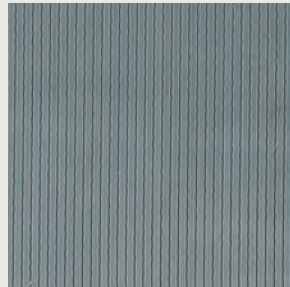
134731



134732



134733



134734

CLICK ON THE PRODUCT IMAGES TO DISCOVER MORE

FABRIC TECHNICAL

TYPE	Velvet
COMPOSITION	100% Polyester
WIDTH	140cm/55.1in
REPEAT	1.5cm/0.6in
PATTERN MATCH	Straight
DOMESTIC USAGE	Upholstery, Drapes, Blinds, Cushions
CONTRACT USAGE	Drapes



KIVA

This brushed jacquard, made from 100% cotton, has wonderful proportions. With a pattern reminiscent of agate sliced in half, Kiva works well in large spaces.

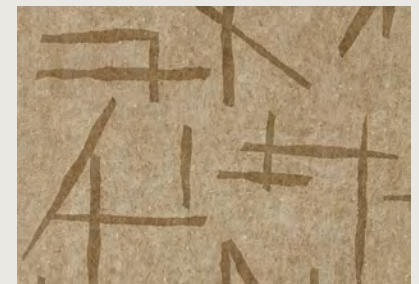
GO WITHS



KIVA 134706



DOLMENS VELVET 134748



DOLMENS 113330

CLICK ON THE PRODUCT IMAGES TO DISCOVER MORE

KIVA FABRIC COLOURWAYS



134706



134707

CLICK ON THE PRODUCT IMAGES TO DISCOVER MORE

FABRIC TECHNICAL

TYPE	Fabric
COMPOSITION	100% Cotton
WIDTH	133cm/52.4in
REPEAT	63.0cm/24.8in
PATTERN MATCH	Straight
DOMESTIC USAGE	Drapes, Blinds, Cushions
CONTRACT USAGE	Drapes



LOAM

Taken from an archive design, a silk warp print, the Harlequin studio has translated the original into an abstract animal print for fabric. The warp print design has a true matt silk effect, coming in and out of the fabric's weave for an organic finish.

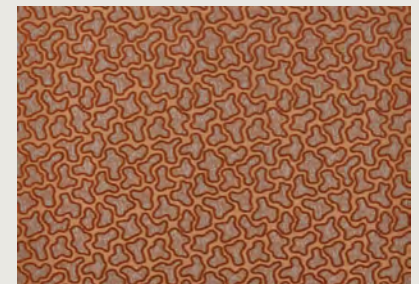
GO WITHS



LOAM 113297



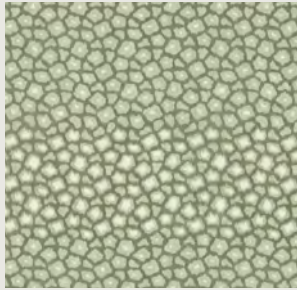
LOAM 134712



MOLTEN 134726

CLICK ON THE PRODUCT IMAGES TO DISCOVER MORE

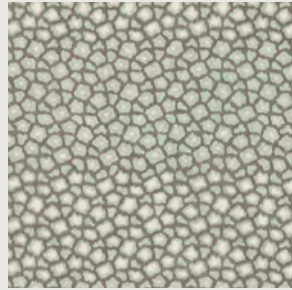
LOAM WALLPAPER COLOURWAYS



113296



113297



113298

CLICK ON THE PRODUCT IMAGES TO DISCOVER MORE

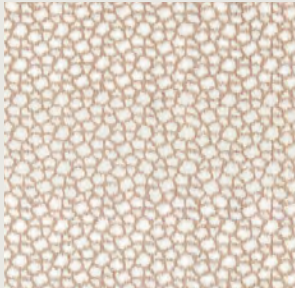
WALLPAPER TECHNICAL

TYPE	Wallpaper
COMPOSITION	Non Woven
WIDTH	52cm/20.5in
REPEAT	67.3cm/26.5in
PATTERN MATCH	Straight Match

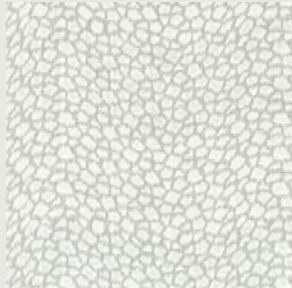
LOAM FABRIC COLOURWAYS



134711



134712



134714

CLICK ON THE PRODUCT IMAGES TO DISCOVER MORE

FABRIC TECHNICAL

TYPE	Fabric
COMPOSITION	100% Polyester
WIDTH	135cm/53.1in
REPEAT	32.5cm/12.8in
PATTERN MATCH	Straight
DOMESTIC USAGE	Upholstery, Drapes, Blinds, Cushions
CONTRACT USAGE	Drapes



MOHO

Moho has a small speckle, an abstract splatter design wallpaper, almost like a mini Enigmatic, reflecting a constellation in the night sky.

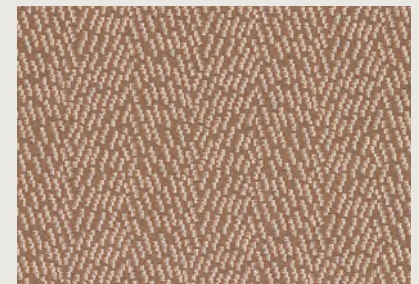
GO WITHS



MOHO 113315



OCEANIC 134699



ALTA 134693

CLICK ON THE PRODUCT IMAGES TO DISCOVER MORE

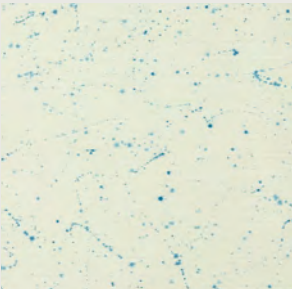
MOHO WALLPAPER COLOURWAYS



113315



113316



113318

CLICK ON THE PRODUCT IMAGES TO DISCOVER MORE

WALLPAPER TECHNICAL

TYPE	Wallpaper
COMPOSITION	Non Woven
WIDTH	68.6cm/27in
REPEAT	89.8cm/35.4in
PATTERN MATCH	Half Drop



MOLTEN

An épinglé velvet, Molten is named after its pattern that echoes the form of lava, pooling out of the volcano. An array of gemstones inspires the colour palette for this 100,000-rub velvet, resulting in a very special fabric.

GO WITHS



MOLTEN 134753



THICKET 134718



CRATER 113326

CLICK ON THE PRODUCT IMAGES TO DISCOVER MORE

MOLTEN FABRIC COLOURWAYS



134726



134727



134728



134753

CLICK ON THE PRODUCT IMAGES TO DISCOVER MORE

FABRIC TECHNICAL

TYPE	Velvet
COMPOSITION	53% Polyester 35% Viscose 12% Cotton
WIDTH	139.5cm/54.9in
REPEAT	41.5cm/16.3in
PATTERN MATCH	Straight
DOMESTIC USAGE	Upholstery, Drapes, Blinds, Cushions
CONTRACT USAGE	Upholstery, Drapes



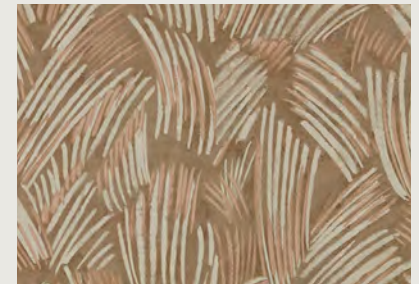
MONOLITH

Woven in 100% silk and screen printed to create overlay marking, Monolith references the structural beauty of balancing rocks. This formation creates an unusual check pattern that gives the design structure and boldness. Large-scale and full of colour, Monolith is truly expressive, ideal for interiors that embrace individuality. It is also available as wallpaper.

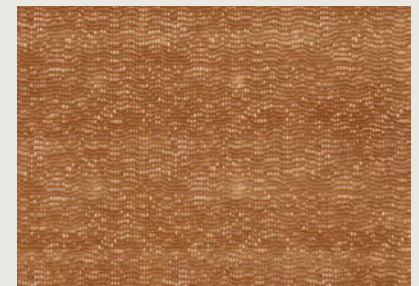
GO WITHS



MONOLITH 134684



GLYPH 113300



CHERT 134743

[CLICK ON THE PRODUCT IMAGES TO DISCOVER MORE](#)

MONOLITH WALLPAPER COLOURWAYS



113319



113320



113321



113322



113323

CLICK ON THE PRODUCT IMAGES TO DISCOVER MORE

WALLPAPER TECHNICAL

TYPE	Wallpaper
COMPOSITION	Non Woven
WIDTH	68.6cm/27in
REPEAT	89.5cm/35.2in
PATTERN MATCH	Straight Match

MONOLITH FABRIC COLOURWAYS



134684



134686



134687



134688

CLICK ON THE PRODUCT IMAGES TO DISCOVER MORE

FABRIC TECHNICAL

TYPE	Fabric
COMPOSITION	100% Silk
WIDTH	137cm/53.9in
REPEAT	84.5cm/33.3in
PATTERN MATCH	Straight
DOMESTIC USAGE	Drapes, Blinds, Cushions
CONTRACT USAGE	Drapes



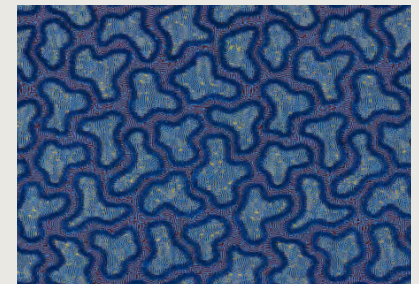
OCEANIC

This jacquard with a heavy chenille is highly tactile, elevating the design of water washing over rocks in shallow pools on the beach.

GO WITHS



OCEANIC 134698



MOLTEN 134753



HIDE 113305

CLICK ON THE PRODUCT IMAGES TO DISCOVER MORE

OCEANIC FABRIC COLOURWAYS



134698



134699



134700

CLICK ON THE PRODUCT IMAGES TO DISCOVER MORE

FABRIC TECHNICAL

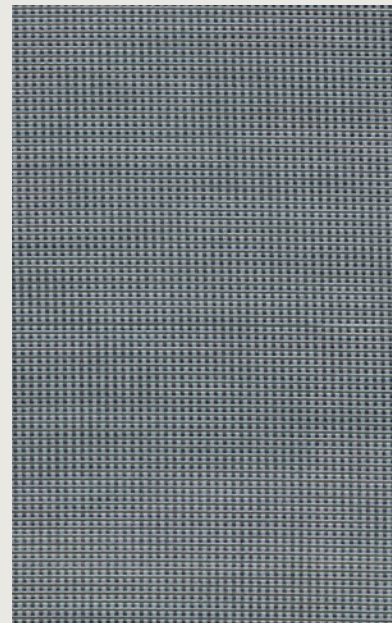
TYPE	Fabric
COMPOSITION	100% Polyester
WIDTH	132.5cm/52.2in
REPEAT	105cm/41.3in
PATTERN MATCH	Straight
DOMESTIC USAGE	Upholstery, Drapes, Blinds, Cushions
CONTRACT USAGE	Drapes



ORE

Ore is formed from a mini dry velvet stripe and a horizontal stripe, creating a checkerboard effect in six gemstone-inspired colourways.

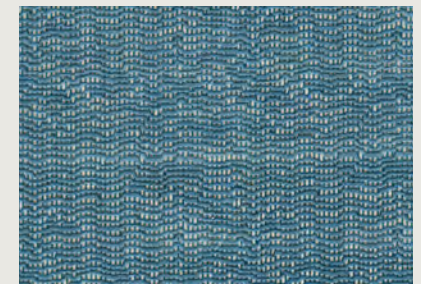
GO WITHS



ORE 134738



CHACO 113312



CHERT 134741

[CLICK ON THE PRODUCT IMAGES TO DISCOVER MORE](#)

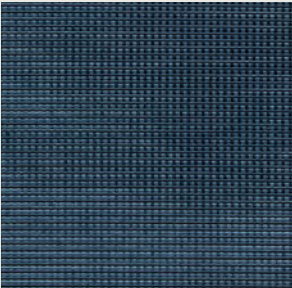
ORE FABRIC COLOURWAYS



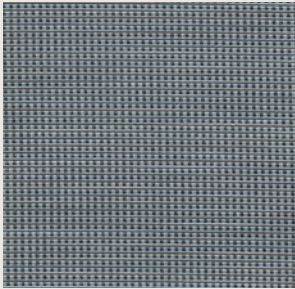
134735



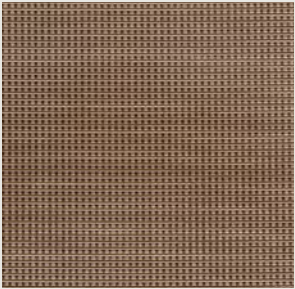
134736



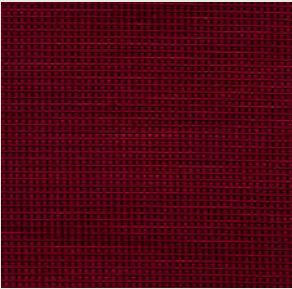
134737



134738



134739



134740

CLICK ON THE PRODUCT IMAGES TO DISCOVER MORE

FABRIC TECHNICAL

TYPE	Velvet
COMPOSITION	100% Polyester
WIDTH	141cm/55.5in
REPEAT	1.0cm/0.4in
PATTERN MATCH	Straight
DOMESTIC USAGE	Upholstery, Drapes, Blinds, Cushions
CONTRACT USAGE	Drapes



SARACENO

Influenced by constellations and markings, Saraceno also has a hint of Japanese influence. This is simple mark-making at its best, translated into an embroidered fabric on a cotton-mix ground.

GO WITHS



SARACENO 134682



MOLTEN 134728



HIDE 113305

CLICK ON THE PRODUCT IMAGES TO DISCOVER MORE

SARACENO FABRIC COLOURWAYS



134681



134682



134683

CLICK ON THE PRODUCT IMAGES TO DISCOVER MORE

FABRIC TECHNICAL

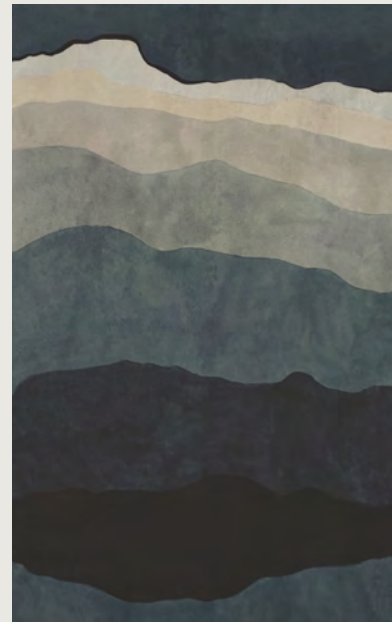
TYPE	Fabric
COMPOSITION	29% Acrylic, 28% Polyester, 23% Cotton, 10% Viscose, 10% Linen
WIDTH	127.7cm/50.3in
REPEAT	58.6cm/23.1in
PATTERN MATCH	Straight
DOMESTIC USAGE	Drapes, Blinds, Cushions
CONTRACT USAGE	Drapes



SEDIMENTARY

Inspired by archival artwork, Sedimentary depicts a striking yet transitional abstract landscape. A beautiful diffusion of colour moves across the design, elevated through a textural finish. This impactful ABCD panel design is produced in two colourways.

GO WITHS



SEDIMENTARY 113327



MOLTEN 134728



DOLMENS 134750

CLICK ON THE PRODUCT IMAGES TO DISCOVER MORE

SEDIMENTARY WALLPAPER COLOURWAYS



113327



113328

[CLICK ON THE PRODUCT IMAGES TO DISCOVER MORE](#)

HANGING INSTRUCTIONS

This design is made up of four 300cm high drops of wallpaper, supplied and printed as one continuous roll measuring 68.5cm in width. The individual drops are indicated by a cut line for ease of hanging.

Digitally printed onto vinyl, this flexible wallcovering is strong and hard-wearing, making it perfectly suited to high traffic areas.

The wallcovering can be tailored to room height by removing any excess from the top and / or bottom of each length.

To achieve the best result we recommend the use of a professional decorator experienced in hanging wide width papers.

EACH ROLL SUPPLIED AS 4 SECTIONS TO BE CUT

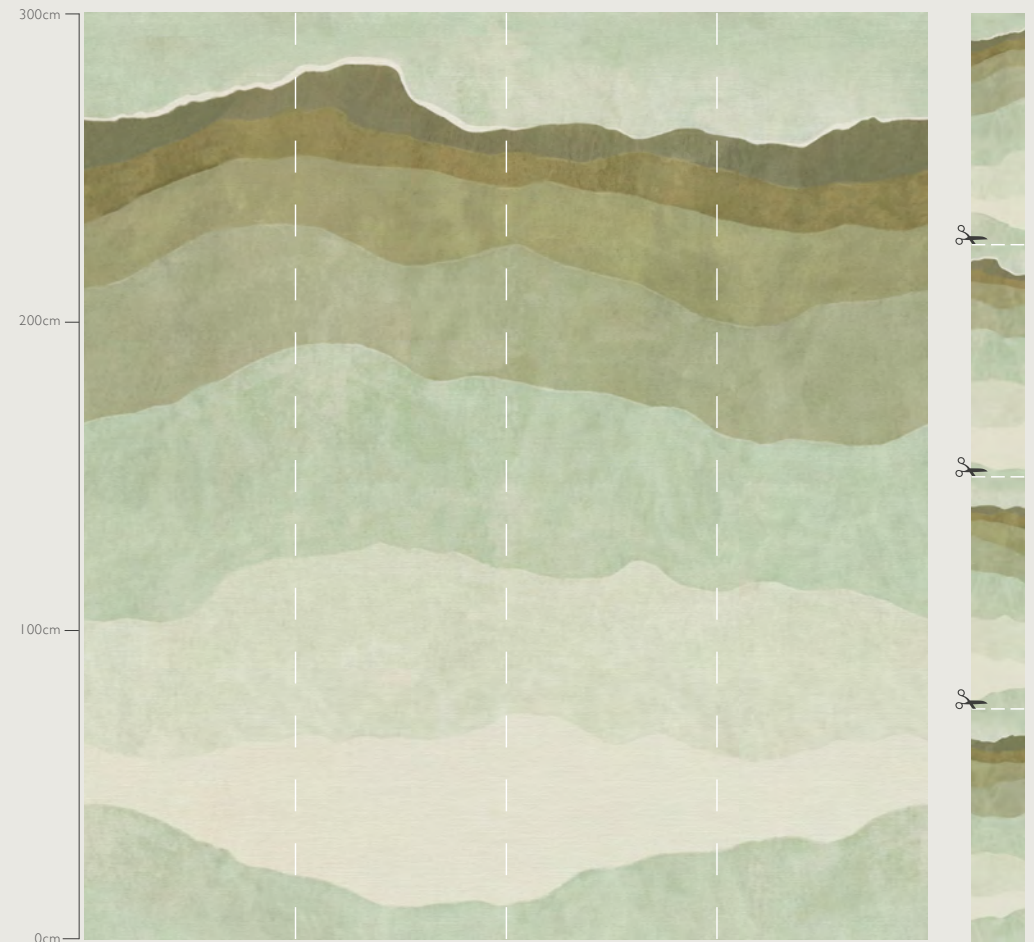
WALLPAPER TECHNICAL

TYPE	Wallpaper
COMPOSITION	Vinyl
WIDTH	68.6cm/27in
REPEAT	300cm/118in
PATTERN MATCH	Straight Match

SEDIMENTARY WALLPAPER COLOURWAYS



SEDIMENTARY - 113327 MIDNIGHT
AS APPLIED TO WALL - 274CM (TOTAL WIDTH) X 300CM (HEIGHT)



SEDIMENTARY - 113328
AS APPLIED TO WALL - 274CM (TOTAL WIDTH) X 300CM (HEIGHT)



SILT

A new, mini take on our Takara design, Silt's shine and matt balance resemble patterns in the sand from natural causes.

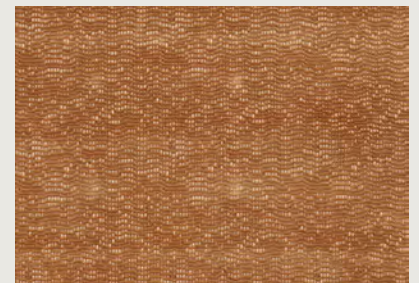
GO WITHS



SILT 134701



HIDE 113305



CHERT 134743

CLICK ON THE PRODUCT IMAGES TO DISCOVER MORE

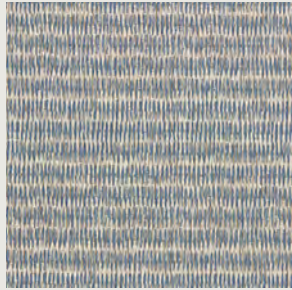
SILT FABRIC COLOURWAYS



134701



134702



134703

CLICK ON THE PRODUCT IMAGES TO DISCOVER MORE

FABRIC TECHNICAL

TYPE	Fabric
COMPOSITION	84% Polyester 16% Cotton
WIDTH	138.3cm/54.4in
REPEAT	23.4cm/9.2in
PATTERN MATCH	Straight
DOMESTIC USAGE	Upholstery, Drapes, Blinds, Cushions
CONTRACT USAGE	Drapes



THICKET

A crewel embroidery on a hessian ground, Thicket is a warm, rustic fabric design inspired by simple markings.

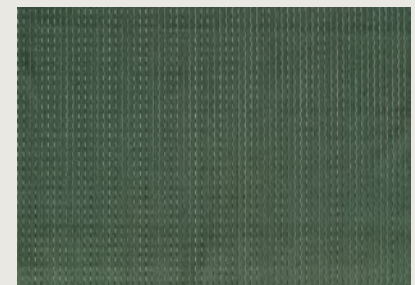
GO WITHS



THICKET 134719



LOAM 113297



KARST 134730

CLICK ON THE PRODUCT IMAGES TO DISCOVER MORE

THICKET FABRIC COLOURWAYS



134718



134719



134720

CLICK ON THE PRODUCT IMAGES TO DISCOVER MORE

FABRIC TECHNICAL

TYPE	Fabric
COMPOSITION	52% Polyester 48% Cotton
WIDTH	129.1cm/50.8in
REPEAT	32.6cm/12.8in
PATTERN MATCH	Straight
DOMESTIC USAGE	Upholstery, Drapes, Blinds, Cushions
CONTRACT USAGE	Drapes



TULE

This wide-width vinyl, designed in the studio, was created by layering sheer fabric onto paper to create a pleated fabric effect. The design was then interpreted onto a vinyl with an embossed finish. The result is a discreet and accessible design.

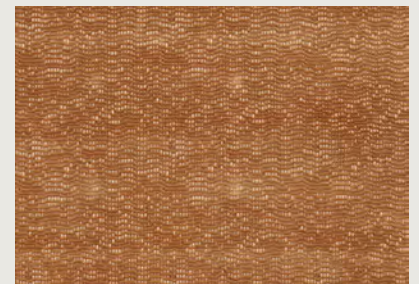
GO WITHS



TULE 113333



SILT 134701



CHERT 134743

[CLICK ON THE PRODUCT IMAGES TO DISCOVER MORE](#)

TULE WALLPAPER COLOURWAYS



I13332



I13333

CLICK ON THE PRODUCT IMAGES TO DISCOVER MORE

WALLPAPER TECHNICAL

TYPE	Wallpaper
COMPOSITION	Vinyl
WIDTH	68.6cm/27in
REPEAT	83.8cm/33in
PATTERN MATCH	Half Drop



ZUNI

Echoing the structure of clouds, Zuni shines throughout the wallpaper with a delicate ombre in each cloud formation. The wallpaper is taken from the fabric for a fabric-on-wall effect.

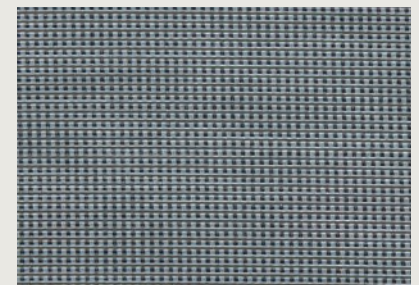
GO WITHS



ZUNI 113307



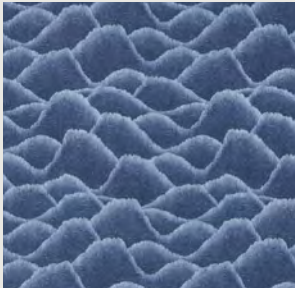
ORE 134737



ORE 134738

CLICK ON THE PRODUCT IMAGES TO DISCOVER MORE

ZUNI WALLPAPER COLOURWAYS



113306



113307



113308



113309

CLICK ON THE PRODUCT IMAGES TO DISCOVER MORE

WALLPAPER TECHNICAL

TYPE	Wallpaper
COMPOSITION	Non Woven
WIDTH	52cm/20.5in
REPEAT	34.6cm/13.6in
PATTERN MATCH	Straight Match

ZUNI FABRIC COLOURWAYS



134704



134705

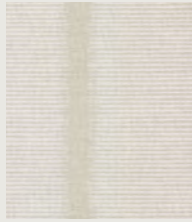
CLICK ON THE PRODUCT IMAGES TO DISCOVER MORE

FABRIC TECHNICAL

TYPE	Fabric
COMPOSITION	80% Polyester 20% Cotton
WIDTH	144.4cm/56.9in
REPEAT	33.0cm/13.0in
PATTERN MATCH	Straight
DOMESTIC USAGE	Drapes, Blinds, Cushions
CONTRACT USAGE	Drapes



CHACO 113310



CHACO 113311



CHACO 113312



CHACO 113313



CHACO 113314



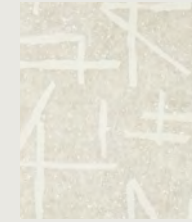
CRATER 113324



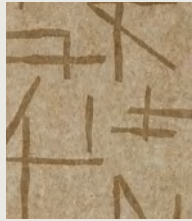
CRATER 113325



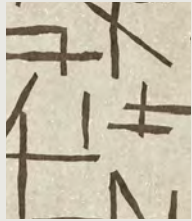
CRATER 113326



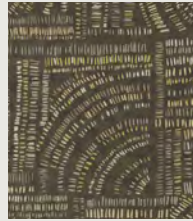
DOLMENS 113329



DOLMENS 113330



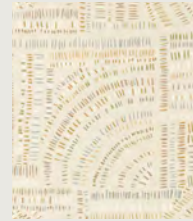
DOLMENS 113331



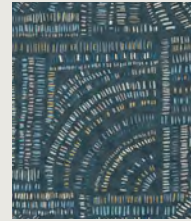
FRESCOES 113291



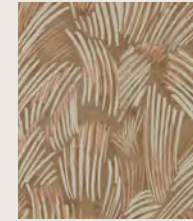
FRESCOES 113292



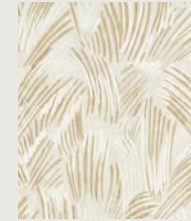
FRESCOES 113294



FRESCOES 113295



GLYPH 113300



GLYPH 113301



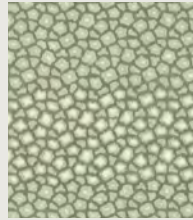
GLYPH 113302



HIDE 113303



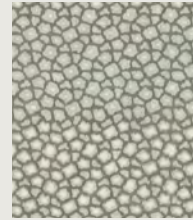
HIDE 113305



LOAM 113296



LOAM 113297



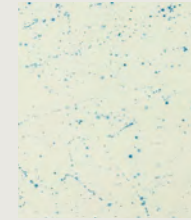
LOAM 113298



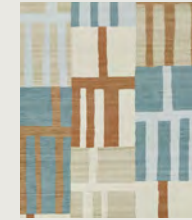
MOHO 113315



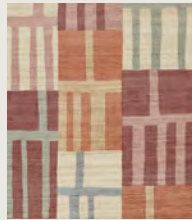
MOHO 113316



MOHO 113318



MONOLITH 113319



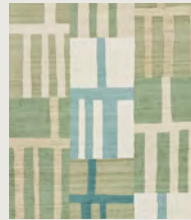
MONOLITH 113320



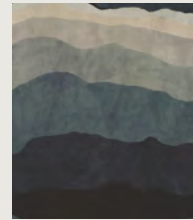
MONOLITH 113321



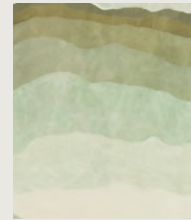
MONOLITH 113322



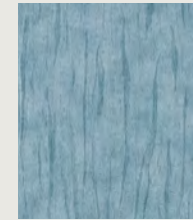
MONOLITH 113323



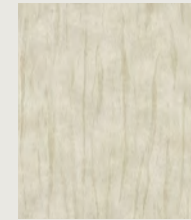
SEDIMENTARY 113327



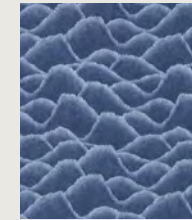
SEDIMENTARY 113328



TULE 113332



TULE 113333



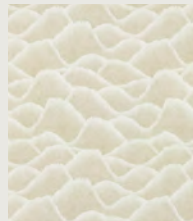
ZUNI 113306



ZUNI 113307



ZUNI 113308



ZUNI 113309

Click on the product images to discover more.

FABRIC INDEX



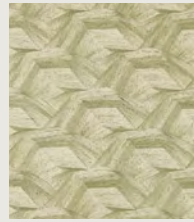
ALTAR 134690



ALTAR 134691



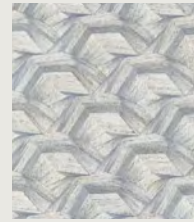
ALTAR 134693



CARTOGRAPHY 134715



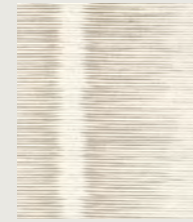
CARTOGRAPHY 134716



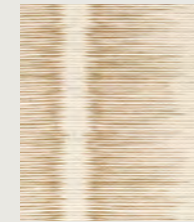
CARTOGRAPHY 134717



CHACO 134708



CHACO 134709



CHACO 134710



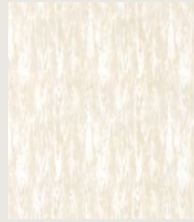
ELIASSEN 134695



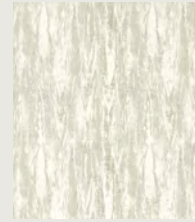
ELIASSEN 134696



ELIASSEN 134697



EROSION 134724



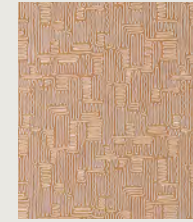
EROSION 134725



HOLLOW 134721



HOLLOW 134722



HOLLOW 134723



KIVA 134706



KIVA 134707



LOAM 134711



LOAM 134712



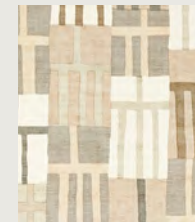
LOAM 134714



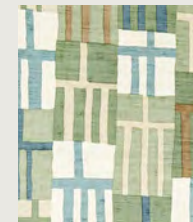
MONOLITH 134684



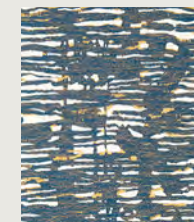
MONOLITH 134686



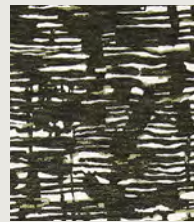
MONOLITH 134687



MONOLITH 134688



OCEANIC 134698



OCEANIC 134699



OCEANIC 134700



SARACENO 134681



SARACENO 134682



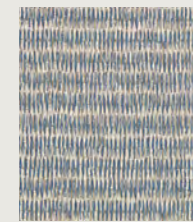
SARACENO 134683



SILT 134701



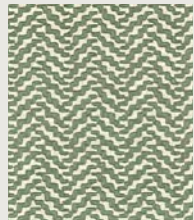
SILT 134702



SILT 134703



THICKET 134718



THICKET 134719



THICKET 134720



ZUNI 134704



ZUNI 134705

Click on the product images to discover more.



CHERT 134741



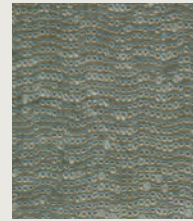
CHERT 134742



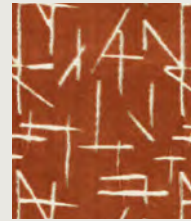
CHERT 134743



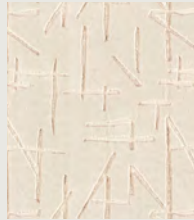
CHERT 134744



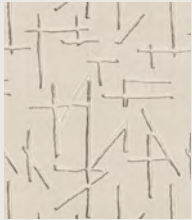
CHERT 134745



DOLMENS 134746



DOLMENS 134747



DOLMENS 134748



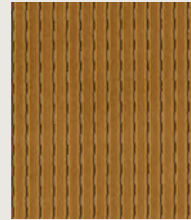
DOLMENS 134749



DOLMENS 134750



DOLMENS 134751



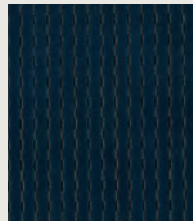
KARST 134729



KARST 134730



KARST 134731



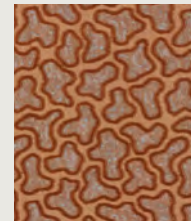
KARST 134732



KARST 134733



KARST 134734



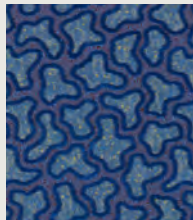
MOLTEN 134726



MOLTEN 134727



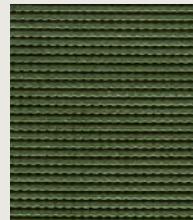
MOLTEN 134728



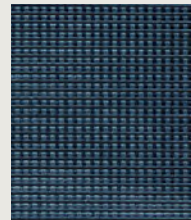
MOLTEN 134753



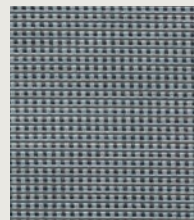
ORE 134735



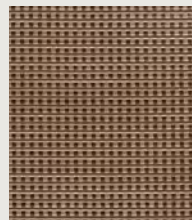
ORE 134736



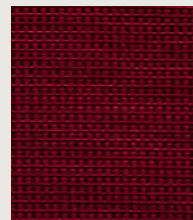
ORE 134737



ORE 134738



ORE 134739



ORE 134740

CONTACT INFORMATION

LONDON SHOWROOM - NEW

Unit 23G, Ground Floor, Central Dome,
Chelsea Harbour Design Centre,
London, SW10 0XE

T: +44 (0)203 903 3700

E: showroom@sandersondesigngroup.com

NEW YORK SHOWROOM

D&D Building, 979 Third Avenue,
Suite 905, New York, NY 10022

T: +1 212 319 7220

E: sales-ny@sandersondesigngroup.com

CHICAGO SHOWROOM

222 W Merchandise Mart Plaza,
Suite 6-117A, Chicago, IL, 60654

T: +1 312 929 2058

E: sales-chicago@sandersondesigngroup.com

GERMANY SHOWROOM

Kronenstrasse 4, 76133 Karlsruhe

T: +49 721 981 985 60

E: verkauf@sandersondesigngroup.com

NETHERLANDS SHOWROOM

ETC Licht & Interieur, Randweg 20,
4104 AC Culemborg

T: +31 65349 3696

E: international@sandersondesigngroup.com

WWW.HARLEQUIN.DESIGN

@HARLEQUINFW

Click on the product images to discover more.