





# OAKHAM

**SCION REVEALS OAKHAM, A BRAND-NEW  
FABRIC AND WALLPAPER COLLECTION  
INSPIRED BY THE BRITISH COUNTRYSIDE'S  
WHIMSY AND WONDER.**

In a fresh new design story that draws on the charm of the area surrounding the Scion design studio, Oakham is an elevated yet charming collection of fabrics and wallpaper designs, featuring prints, embroideries and tactile weaves in a sophisticated embrace of Britishness.

Inspired by strolls along babbling brooks and waterfalls, over rivers and hillsides, uplifting, contemporary designs with a touch of whimsy and imagination come to the fore. The nostalgia of British style and charm pervades the collection with a fresh and contemporary approach.

Interpretations of floral and leaf trails meet the charming silhouette of matchsticks and the wiggle of a meandering riverbed, transporting you into the great outdoors. This design story celebrates the small details and playful motifs that make these patterns instantly iconic and recognisable to Scion.

**ALL DESIGNS ARE CREATED IN  
THE SCION STUDIO IN THE UK.**

**PRINTED FABRICS AND WALLPAPERS ARE  
MADE AT THE BRAND'S HISTORIC FACTORIES  
IN LOUGHBOROUGH AND LANCASTER.**

# THE STORY

PLAYFUL BRITISH DESIGNS THAT  
BRING JOY TO THE EVERYDAY.



Texture and technique come together in an eclectic layering of style and form. Printing techniques achieve a sense of movement, while embroideries display a mature sense of style while still offering a playfulness in pattern and motif.

"Oakham is a charming design story, utilising modern techniques alongside the studio's creativity to celebrate modern design moments and contemporary British storytelling. Conversational and coordinating designs establish this as a go-to Scion collection within the portfolio. A fresh take on textured designs meets wonderful coast blue, barley, rust and pine palettes in a new direction for our playful brand." Claire Greenfield, Lead Designer, Scion.





## BIMBLE

Take an imaginative stroll along this meandering path in this wandering embroidery. Conjuring memories of journeys on foot and ambles along the river, Bimble is a modern multidirectional design with movement and shaping. The top stitch in the embroidery references a blanket stitch for detail and texture in a range of vivid colourways.



BIMBLE

134673



BIMBLE

134671



SPLIT PEA

113287

[CLICK ON THE PRODUCT IMAGES TO DISCOVER MORE](#)

# BIMBLE

## WALLPAPER



BIMBLE 113248



BIMBLE 113249



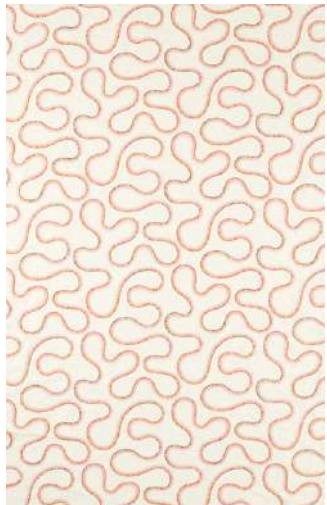
BIMBLE 113250



BIMBLE 113251

<b>TYPE</b>	Wallpaper
<b>COMPOSITION</b>	130GSM Non-woven
<b>WIDTH</b>	52.0cm / 20.5ins
<b>REPEAT</b>	38.3cm / 15.1 ins
<b>PATTERN MATCH</b>	Straight Match

## FABRIC



BIMBLE 134670



BIMBLE 134671



BIMBLE 134672



BIMBLE 134673

<b>TYPE</b>	Drapery
<b>COMPOSITION</b>	67% POLYESTER, 33% COTTON
<b>WIDTH</b>	129.5cm / 51ins
<b>REPEAT</b>	47.5cm / 18.7ins
<b>PATTERN MATCH</b>	Straight Match
<b>DOMESTIC USAGE</b>	Drapes, Blinds, Cushions
<b>CONTRACT USAGE</b>	Drapes



## BRADGATE

Bradgate is a design that notices the details on country walks, like track marks found in the mud through an open pasture. This imprint in nature translates into a great stripe for the wall, broad, printed with texture and referencing a surface print in the highlight colour of the design. Softer colours in the palette temper the boldness of this design, named after a local park to the Scion studio.

[CLICK ON THE PRODUCT IMAGES TO DISCOVER MORE](#)

# BRADGATE

WALLPAPER



BRADGATE

113258



BRADGATE

113259



BRADGATE

113260

<b>TYPE</b>	Wallpaper
<b>COMPOSITION</b>	130GSM Non-woven
<b>WIDTH</b>	52.0cm / 20.5ins
<b>REPEAT</b>	14.2cm / 5.6ins
<b>PATTERN MATCH</b>	Straight Match



## CANTER

Trotting along with grace and just a little turn of the cheek, Canter was originally created as a linocut, resulting in bold, handcrafted marks visible in the design.

Our galloping hero's stylised mane and tail reflect mythical fantasy influences, making him more vivid and handsome. Playful horses canter back and forth in action.

[CLICK ON THE PRODUCT IMAGES TO DISCOVER MORE](#)

# CANTER

WALLPAPER



CANTER

113252



CANTER

113253



CANTER

113254

<b>TYPE</b>	Wallpaper
<b>COMPOSITION</b>	130GSM Non-woven
<b>WIDTH</b>	52.0cm / 20.5ins
<b>REPEAT</b>	52.0cm / 20.5ins
<b>PATTERN MATCH</b>	Half Drop

FABRIC



CANTER

121318



CANTER

121319



CANTER

121320

<b>TYPE</b>	Drapery
<b>COMPOSITION</b>	90% COTTON, 10% LINEN
<b>WIDTH</b>	142.5cm / 56.1ins
<b>REPEAT</b>	34.0cm / 13.4ins
<b>PATTERN MATCH</b>	Straight Match
<b>DOMESTIC USAGE</b>	Upholstery, Drapes, Blinds, Cushions



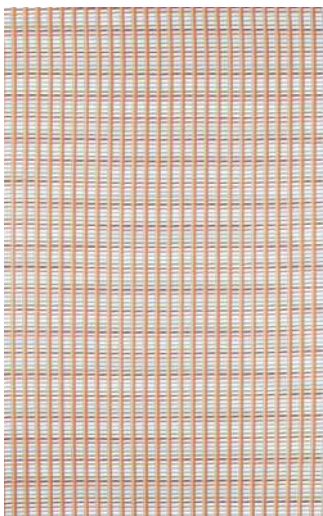
## CHARNWOOD

This small-scale, multicoloured upholstery fabric feels nostalgic. Its cosy blanket design, texture, muted tones, and dry handle complete the appeal of this stripes-on-stripes design.

[CLICK ON THE PRODUCT IMAGES TO DISCOVER MORE](#)

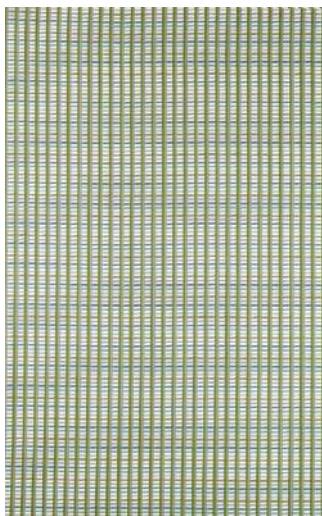
# CHARNWOOD

WEAVES



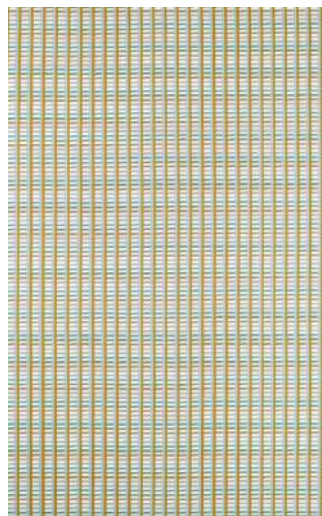
CHARNWOOD

134641



CHARNWOOD

134642



CHARNWOOD

134643

<b>TYPE</b>	Weave
<b>COMPOSITION</b>	100% RE-CYCLED POLYESTER
<b>WIDTH</b>	143cm / 56.3ins
<b>REPEAT</b>	7.5cm / 3ins
<b>PATTERN MATCH</b>	Straight Match
<b>DOMESTIC USAGE</b>	Upholstery, Drapes, Blinds, Cushions
<b>CONTRACT USAGE</b>	Drapes



## DANCING DAISIES

A contemporary floral design, Dancing Daisies' naively drawn flowers are a classic Scion interpretation, now layered and grown into a great all-over fabric and wallpaper design. The intertwined leaves and stalks make a statement while being a suitably subtle mid-scale pattern. Free and flowing, this design has an untamed and wild charm, where each colourway references the times of the day in tone.



DANCING DAISIES 121332



SWEET BAY 121313



OAKHAM 113238

CLICK ON THE PRODUCT IMAGES TO DISCOVER MORE

# DANCING DAISIES

WALLPAPER



DANCING DAISIES 113282



DANCING DAISIES 113283



DANCING DAISIES 113284

<b>TYPE</b>	Wallpaper
<b>COMPOSITION</b>	130GSM Non-woven
<b>WIDTH</b>	52.0cm / 20.5ins
<b>REPEAT</b>	52.4cm / 20.6ins
<b>PATTERN MATCH</b>	Straight Match

FABRIC



DANCING DAISIES 121331



DANCING DAISIES 121332



DANCING DAISIES 121333

<b>TYPE</b>	Fabric
<b>COMPOSITION</b>	90% COTTON 10% LINEN (ECOFAST)
<b>WIDTH</b>	140cm / 55.1ins
<b>REPEAT</b>	26.5cm / 10.4ins
<b>PATTERN MATCH</b>	Half Drop
<b>DOMESTIC USAGE</b>	Upholstery, Drapes, Blinds, Cushions



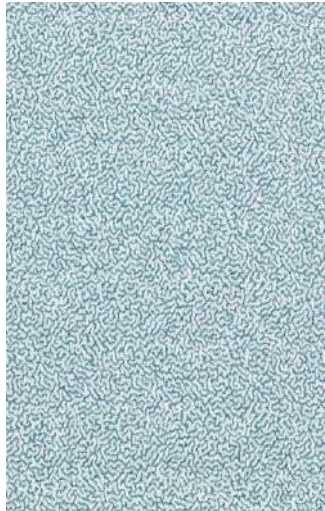
## DUCKWEED

Referencing pond life, like the tiny, free-floating freshwater plant named after, Duckweed, echoes the ripples of water, almost vermicelli-like in this small-scale jacquard.

[CLICK ON THE PRODUCT IMAGES TO DISCOVER MORE](#)

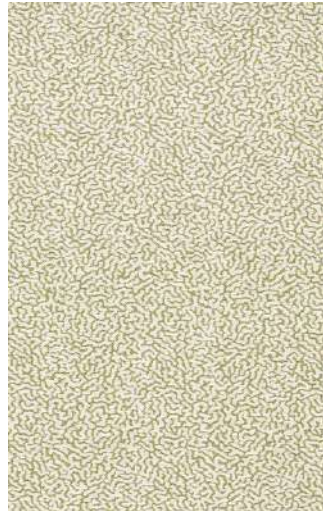
# DUCKWEED

FABRIC



DUCKWEED

134625



DUCKWEED

134626



DUCKWEED

134627

<b>TYPE</b>	Drapery
<b>COMPOSITION</b>	58% RE-CYCLED POLYESTER, 42% COTTON
<b>WIDTH</b>	139cm / 54.7ins
<b>REPEAT</b>	15.0cm / 5.9ins
<b>PATTERN MATCH</b>	Straight Match
<b>DOMESTIC USAGE</b>	Upholstery, Drapes, Blinds, Cushions
<b>CONTRACT USAGE</b>	Drapes



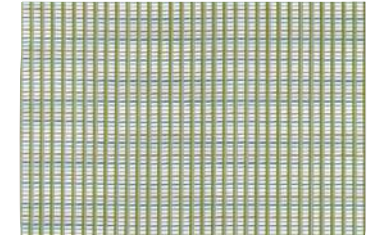
## FALLING FOSS

Taken from an original artwork designed for a jacquard weave and translated into a large-scale scene, Falling Foss has been repainted to give it a mural landscape feel. Telling a story of slow and easy walks through waterfalls and over gently undulating hills and riverbanks, the design offers something familiar for everyone to find. Trees, rocks, streams and brooks come together in harmony.



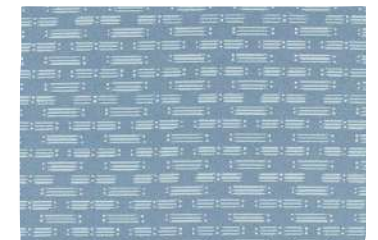
FALLING FOSS

113264



CHARNWOOD

134642



MATCHSTICKS

134628

CLICK ON THE PRODUCT IMAGES TO DISCOVER MORE

# FALLING FOSS

WALLPAPER



FALLING FOSS 113264



FALLING FOSS 113265



FALLING FOSS 113266



FALLING FOSS 113267

<b>TYPE</b>	Wallpaper
<b>COMPOSITION</b>	130GSM Non-woven
<b>WIDTH</b>	52.0cm / 20.5ins
<b>REPEAT</b>	70.9cm / 27.9ins
<b>PATTERN MATCH</b>	Half Drop

FABRIC



FALLING FOSS 134678



FALLING FOSS 134679



FALLING FOSS 134680

<b>TYPE</b>	Drapery
<b>COMPOSITION</b>	58% RE-CYCLED POLYESTER 42% COTTON
<b>WIDTH</b>	138cm / 54.3ins
<b>REPEAT</b>	55.0cm / 21.7ins
<b>PATTERN MATCH</b>	Straight
<b>DOMESTIC USAGE</b>	Upholstery, Drapes, Blinds, Cushions
<b>CONTRACT USAGE</b>	Drapes



## FRINGED POPPY

This abstract take on a floral is as charming as it is contemporary. Its two-colour, multidirectional poppies are scattered in fan shapes as if pressed between the pages of a book. Painted in the studio, the watercolour movement adds to the fresh and modern finish.

[CLICK ON THE PRODUCT IMAGES TO DISCOVER MORE](#)

# FRINGED POPPY

FABRIC



FRINGED POPPY 121334



FRINGED POPPY 121335

<b>TYPE</b>	Drapery
<b>COMPOSITION</b>	90% COTTON 10% LINEN (ECOFAST)
<b>WIDTH</b>	138.5cm / 54.5ins
<b>REPEAT</b>	27.0cm / 10.6ins
<b>PATTERN MATCH</b>	Half Drop
<b>DOMESTIC USAGE</b>	Upholstery, Drapes, Blinds, Cushions



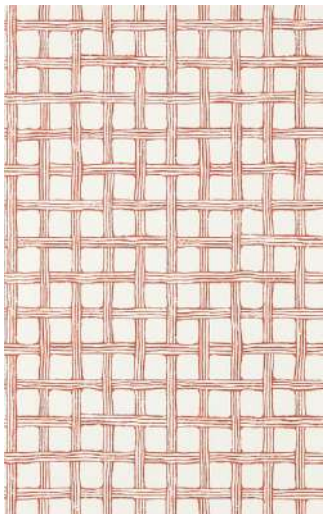
## FRETWORK

This simplified design is taken from an archive document and creates a lovely lattice, similar to a trellis. With a hint of geometric form, Fretwork has a hand-drawn feel, with its imprecise markings creating character. A little wonky, the irregular pattern of Fretwork is charming, giving a cottage feel.

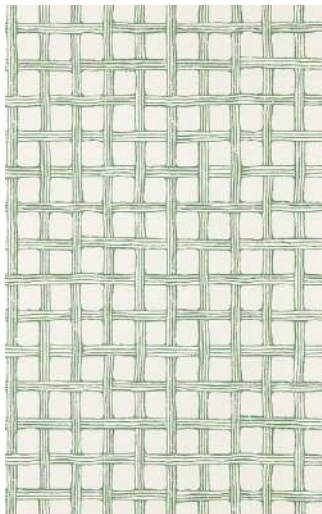
[CLICK ON THE PRODUCT IMAGES TO DISCOVER MORE](#)

# FRETWORK

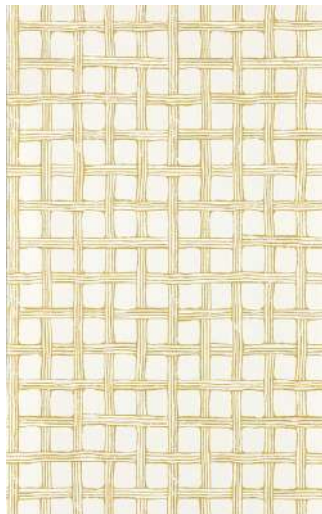
WALLPAPER



FRETWORK 113261



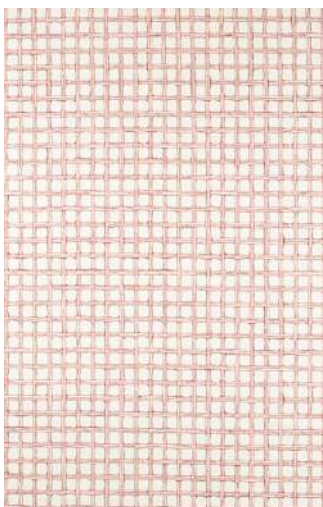
FRETWORK 113262



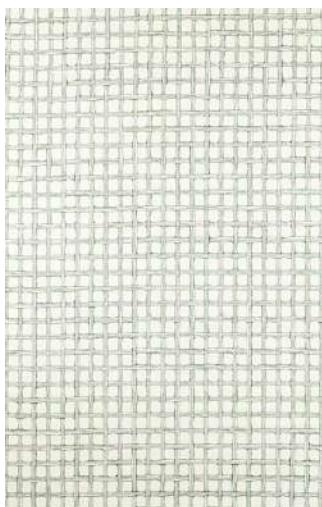
FRETWORK 113263

<b>TYPE</b>	Wallpaper
<b>COMPOSITION</b>	130GSM Non-woven
<b>WIDTH</b>	52.0cm / 20.5ins
<b>REPEAT</b>	58.8cm / 23.1ins
<b>PATTERN MATCH</b>	Straight Match

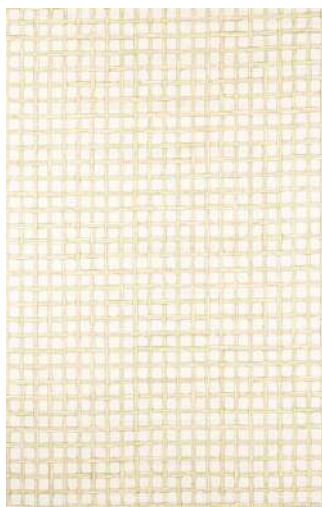
FABRIC



FRETWORK 121321



FRETWORK 121322



FRETWORK 121323

<b>TYPE</b>	Drapery
<b>COMPOSITION</b>	90% COTTON 10% LINEN (ECOFAST)
<b>WIDTH</b>	140cm / 55.1ins
<b>REPEAT</b>	30.5cm / 12ins
<b>PATTERN MATCH</b>	Straight Match
<b>DOMESTIC USAGE</b>	Upholstery, Drapes, Blinds, Cushions
<b>CONTRACT USAGE</b>	Upholstery



## HAYLOFT

A witty embroidery design that references barn doors with the diamond formation. Smaller diamonds sit within the structure to disperse the colour and create this charming trellis-style coordinate.

[CLICK ON THE PRODUCT IMAGES TO DISCOVER MORE](#)

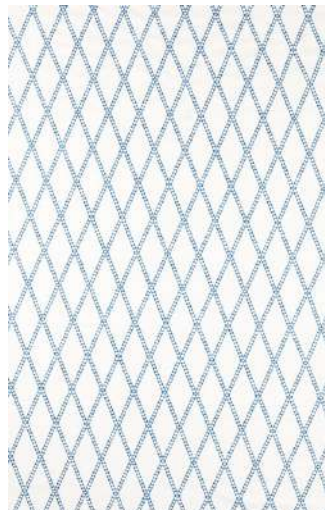
# HAYLOFT

WEAVES



HAYLOFT

134674



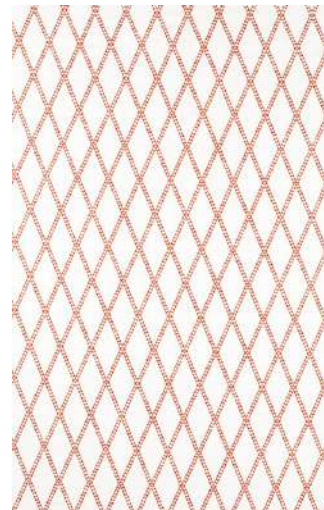
HAYLOFT

134675



HAYLOFT

134676



HAYLOFT

134677

**TYPE**

Drapery

**COMPOSITION**

45% RE-CYCLED POLYESTER,  
41% COTTON, 14% POLYESTER

**WIDTH**

132cm / 52ins

**REPEAT**

25.0cm / 49.2ins

**PATTERN MATCH**

Straight Match

**DOMESTIC USAGE**

Drapes, Blinds, Cushions



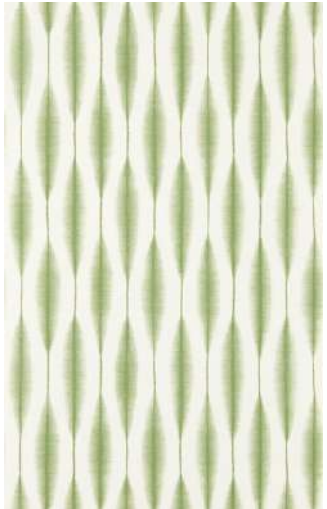
## KASURI

Kasuri reflects feather tips in the design through its striking brushed ikat stripe. Like bleeding ink, a blurred appearance gives this design a soft, liveable finish.

[CLICK ON THE PRODUCT IMAGES TO DISCOVER MORE](#)

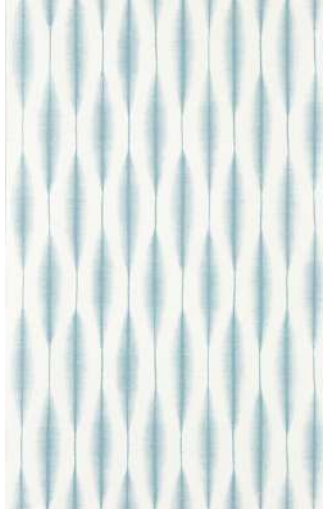
# KASURI

WALLPAPER



KASURI

113271



KASURI

113272



KASURI

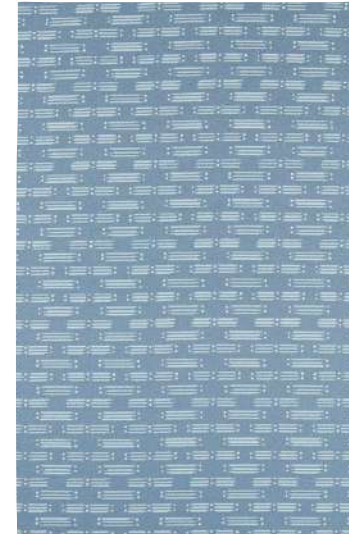
113273

<b>TYPE</b>	Wallpaper
<b>COMPOSITION</b>	130GSM Non-woven
<b>WIDTH</b>	52.0cm / 20.5ins
<b>REPEAT</b>	52.0cm / 20.5ins
<b>PATTERN MATCH</b>	Straight Match



# MATCHSTICKS

Strike a match and embrace the adventure of the outdoors or the cosiness of a log fire inside. Matchsticks is a simple yet effective design, with the tips of the sticks resembling surface print dots.



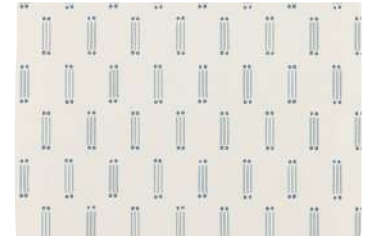
MATCHSTICKS

134628



TWYXCROSS

134652



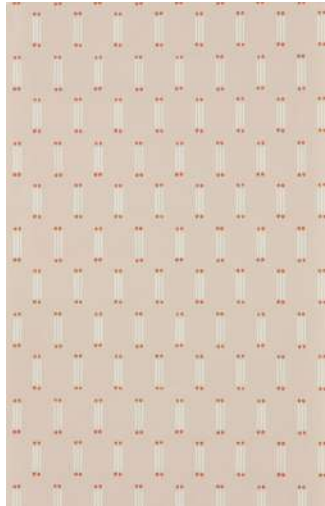
MATCHSTICKS

113281

CLICK ON THE PRODUCT IMAGES TO DISCOVER MORE

# MATCHSTICKS

## WALLPAPER



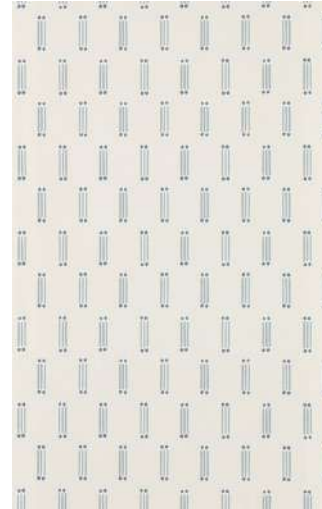
MATCHSTICKS 113278



MATCHSTICKS 113279



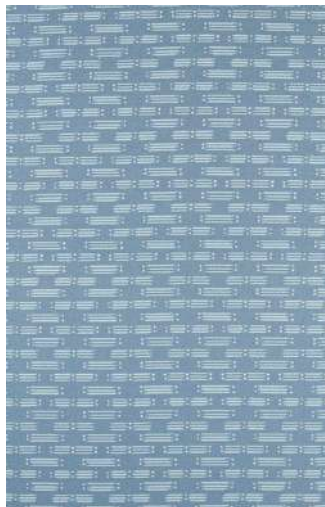
MATCHSTICKS 113280



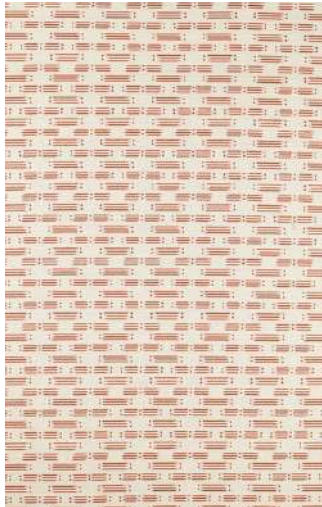
MATCHSTICKS 113281

<b>TYPE</b>	Wallpaper
<b>COMPOSITION</b>	130GSM Non-woven
<b>WIDTH</b>	52.0cm / 20.5ins
<b>REPEAT</b>	27.5cm / 10.8ins
<b>PATTERN MATCH</b>	Straight Match

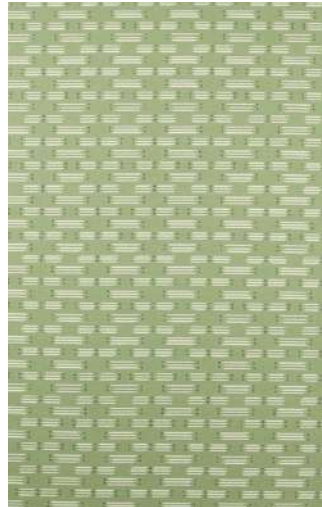
## WEAVES



MATCHSTICKS 134628



MATCHSTICKS 134629



MATCHSTICKS 134630



MATCHSTICKS 134631

<b>TYPE</b>	Weave
<b>COMPOSITION</b>	100% RE-CYCLED POLYESTER
<b>WIDTH</b>	140cm / 55.1ins
<b>REPEAT</b>	2.3cm / 0.9ins
<b>PATTERN MATCH</b>	Straight Match
<b>DOMESTIC USAGE</b>	Upholstery, Drapes, Blinds, Cushions
<b>CONTRACT USAGE</b>	Drapes



## MELTON STRIPE

A classic stripe with a contrasting satin stripe element adds colour and texture. This subtle herringbone weave is very smart, simple and oozes coastal charm.

[CLICK ON THE PRODUCT IMAGES TO DISCOVER MORE](#)

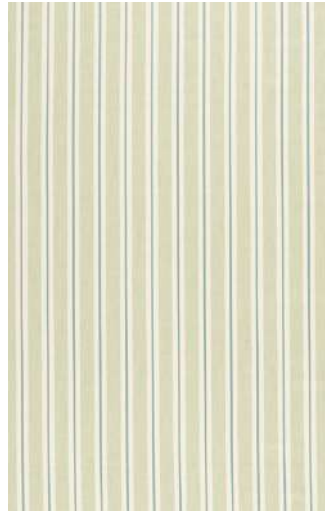
# MELTON STRIPE

WEAVES



MELTON STRIPE

134644



MELTON STRIPE

134645



MELTON STRIPE

134646

**TYPE**

Weave

**COMPOSITION**

81% COTTON, 14% LINEN  
5% POLYESTER

**WIDTH**

139.5cm / 54.9ins

**REPEAT**

0.0cm / 0ins

**PATTERN MATCH**

Straight Match

**DOMESTIC USAGE**

Upholstery, Drapes,  
Blinds, Cushions

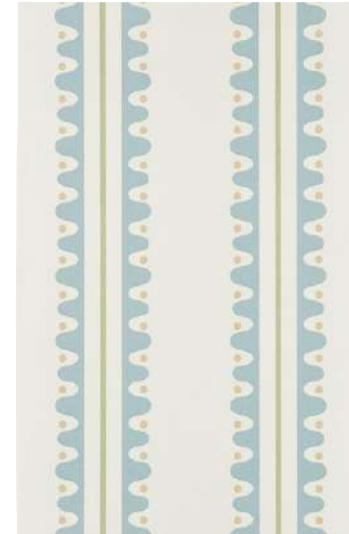
**CONTRACT USAGE**

Drapes



## OAKHAM

A nod to the area local to Scion's design studio, Oakham strolls along the river edge. Imagine stepping stones and riverbanks as you make your way along. A contemporary take on a country walk with added colour for freshness.



OAKHAM

113239



OAKHAM

134661



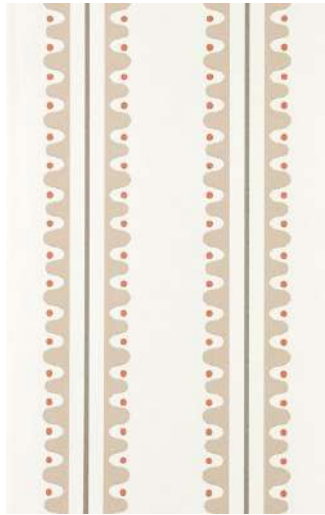
OAKHAM

134664

[CLICK ON THE PRODUCT IMAGES TO DISCOVER MORE](#)

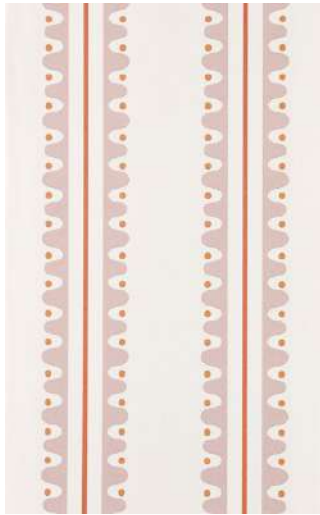
# OAKHAM

## WALLPAPER



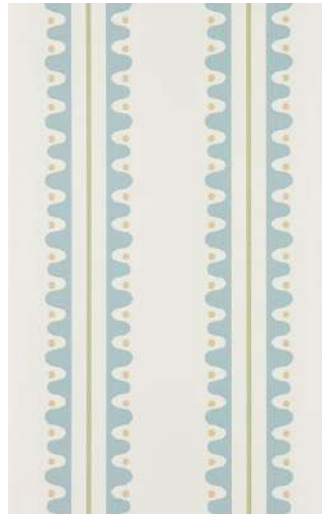
OAKHAM

113237



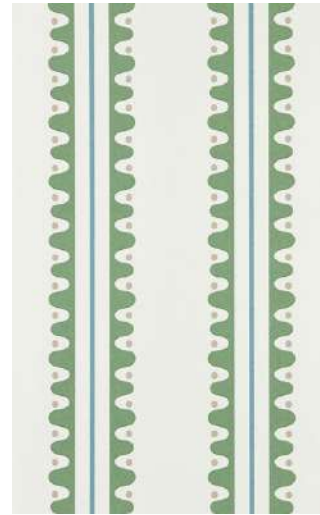
OAKHAM

113238



OAKHAM

113239

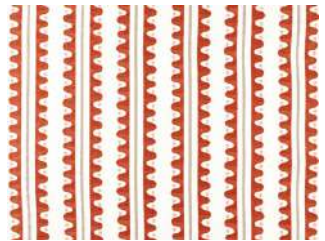


OAKHAM

113240

<b>TYPE</b>	Wallpaper
<b>COMPOSITION</b>	130GSM Non-woven
<b>WIDTH</b>	52.0cm / 20.5ins
<b>REPEAT</b>	19.3cm / 7.6ins
<b>PATTERN MATCH</b>	Straight Match

## FABRIC



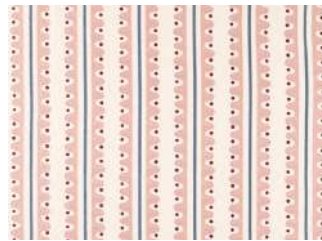
OAKHAM

134661



OAKHAM

134662



OAKHAM

134663



OAKHAM

134664

<b>TYPE</b>	Drapery
<b>COMPOSITION</b>	65% COTTON, 35% POLYESTER
<b>WIDTH</b>	139.5cm / 54.9ins
<b>REPEAT</b>	12.0cm / 4.7ins
<b>PATTERN MATCH</b>	Straight Match
<b>DOMESTIC USAGE</b>	Drapes, Blinds, Cushions
<b>CONTRACT USAGE</b>	Drapes



OAKHAM

134665



## RAFT STRIPE

Created from a lino print, ripples of the water translate into an all-over stripe, undulating with a slightly retro feel. A stamp effect gives a charming, handcrafted quality feel and makes a great coordinating design.



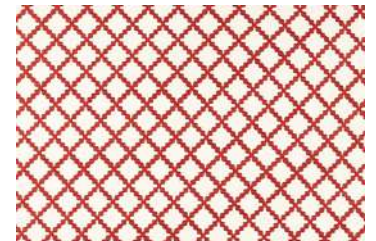
RAFT STRIPE

113241



MELTON STRIPE

134644



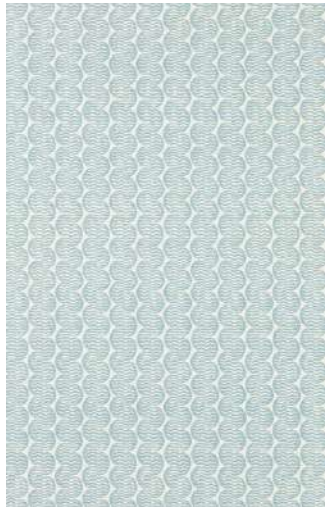
SWITHLAND

134666

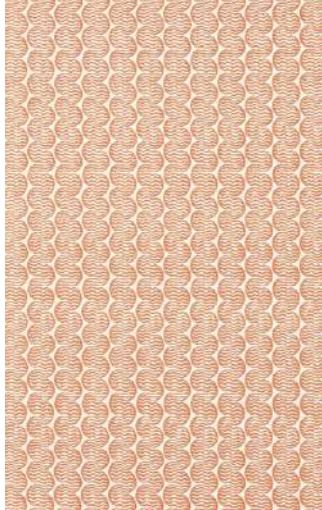
[CLICK ON THE PRODUCT IMAGES TO DISCOVER MORE](#)

# RAFT STRIPE

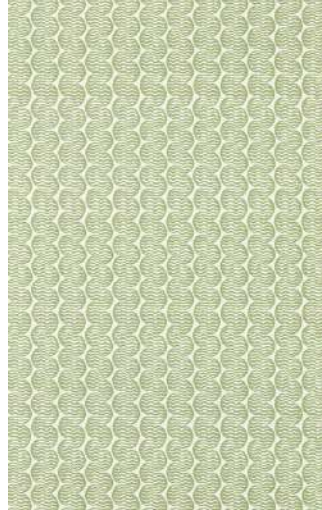
## WALLPAPER



RAFT STRIPE 113241



RAFT STRIPE 113242



RAFT STRIPE 113243



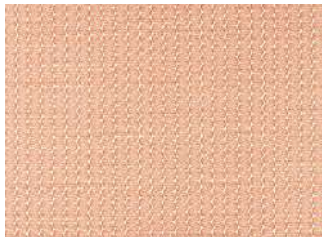
RAFT STRIPE 113244

<b>TYPE</b>	Wallpaper
<b>COMPOSITION</b>	130GSM Non-woven
<b>WIDTH</b>	52.0cm / 20.5ins
<b>REPEAT</b>	36.6cm / 14.4ins
<b>PATTERN MATCH</b>	Straight Match

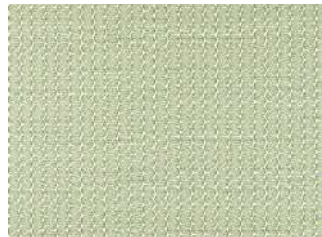
## FABRICS



RAFT STRIPE 121324



RAFT STRIPE 121325



RAFT STRIPE 121326



RAFT STRIPE 121327

<b>TYPE</b>	Drapery
<b>COMPOSITION</b>	90% COTTON 10% LINEN (ECOFAST)
<b>WIDTH</b>	140cm / 55.1ins
<b>REPEAT</b>	19.0cm / 7.5ins
<b>PATTERN MATCH</b>	Straight Match
<b>DOMESTIC USAGE</b>	Upholstery, Drapes, Blinds, Cushions
<b>CONTRACT USAGE</b>	Upholstery

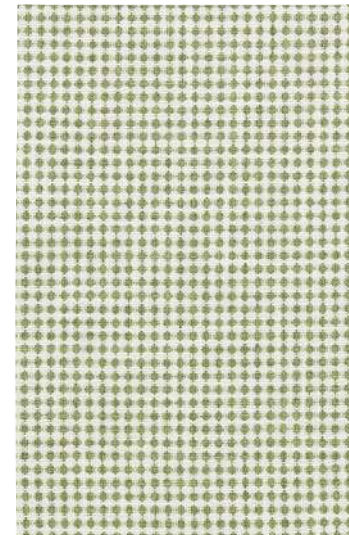


RAFT STRIPE 121328



## RAGDALE

Diamonds or soft squares come together in this classic woven construction for a fabric that would sit at home in any log cabin. Super usable, this small-scale, dry weave is versatile and charming.



RAGDALE

134637



FALLING FOSS

134679



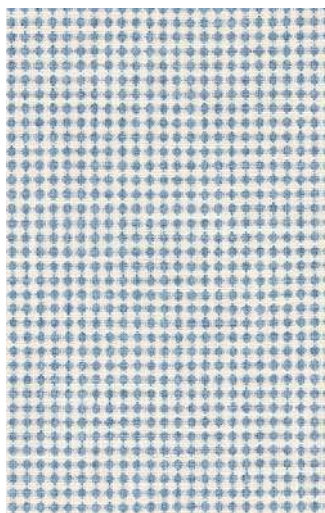
OAKHAM

134662

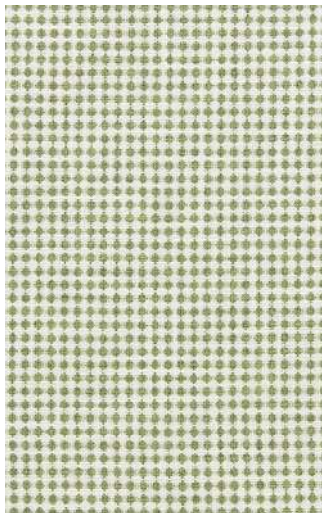
CLICK ON THE PRODUCT IMAGES TO DISCOVER MORE

# RAGDALE

WEAVE



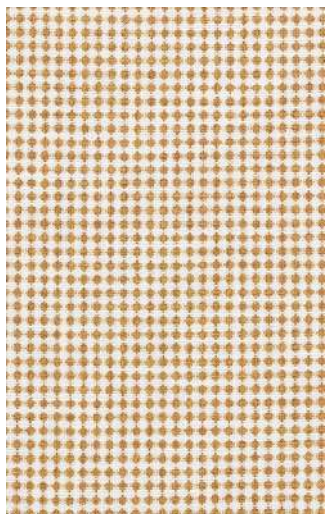
RAGDALE 134636



RAGDALE 134637



RAGDALE 134638



RAGDALE 134639



RAGDALE 134640

<b>TYPE</b>	Weave
<b>COMPOSITION</b>	100% POLYESTER
<b>WIDTH</b>	140cm / 55.1ins
<b>REPEAT</b>	1.5cm / 10.6ins
<b>PATTERN MATCH</b>	Straight Match
<b>DOMESTIC USAGE</b>	Upholstery, Drapes, Blinds, Cushions
<b>CONTRACT USAGE</b>	Drapes



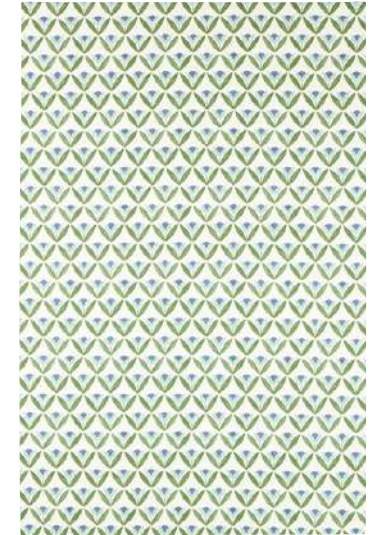
## SAPLING

New life springs in these shoots, which grow into the Tulip Trellis design. These saplings create a soft chevron pattern for a buildable design in schemes.



SAPLING

113277



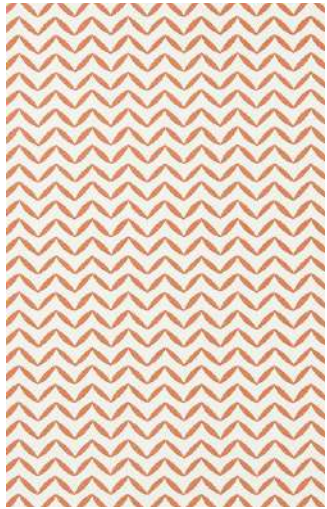
TULIP TRELLIS

121329

[CLICK ON THE PRODUCT IMAGES TO DISCOVER MORE](#)

# SAPLING

WALLPAPER



SAPLING

113274



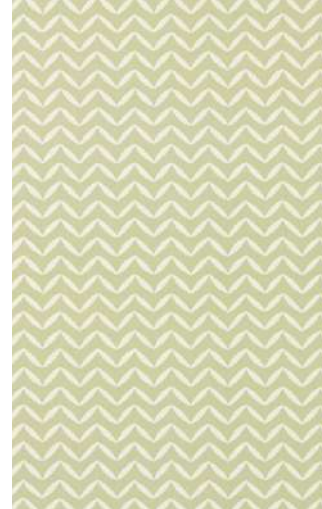
SAPLING

113275



SAPLING

113276



SAPLING

113277

<b>TYPE</b>	Wallpaper
<b>COMPOSITION</b>	130GSM Non-woven
<b>WIDTH</b>	52.0cm / 20.5ins
<b>REPEAT</b>	21.8cm / 8.6ins
<b>PATTERN MATCH</b>	Straight Match



## SORREL

Inspired by the sorrel leaf, Sorrel was designed in the studio and formed from a marbling technique, like raindrops. Irregular with many variations, the chenille fabric has a subtle sheen and dryness in equal measure.

CLICK ON THE PRODUCT IMAGES TO DISCOVER MORE



SORREL

134658



OAKHAM

113238



SWEET BAY

121313

CLICK ON THE PRODUCT IMAGES TO DISCOVER MORE

# SORREL

WEAVE



SORREL

134656



SORREL

134657



SORREL

134658



SORREL

134659



SORREL

134660

<b>TYPE</b>	Weave
<b>COMPOSITION</b>	43% VISCOSE, 33% COTTON 24% POLYESTER
<b>WIDTH</b>	135cm / 53.1ins
<b>REPEAT</b>	19.0cm / 7.5ins
<b>PATTERN MATCH</b>	Straight Match
<b>DOMESTIC USAGE</b>	Upholstery, Drapes, Blinds, Cushions
<b>CONTRACT USAGE</b>	Drapes



## SPLIT PEAS

Split Pea is a detailed stripe design influenced by a block print pattern from the archive. Watery wiggles, spots and stripes come together in a witty take on a sophisticated pattern.

[CLICK ON THE PRODUCT IMAGES TO DISCOVER MORE](#)

# SPLIT PEA

## WALLPAPER



SPLIT PEA

113285



SPLIT PEA

113286



SPLIT PEA

113287

<b>TYPE</b>	Wallpaper
<b>COMPOSITION</b>	130GSM Non-woven
<b>WIDTH</b>	52.0cm / 20.5ins
<b>REPEAT</b>	59.6cm / 23.5ins
<b>PATTERN MATCH</b>	Straight Match

## FABRIC



SPLIT PEA

121315



SPLIT PEA

121316



SPLIT PEA

121317

<b>TYPE</b>	Drapery
<b>COMPOSITION</b>	90% COTTON 10% LINEN (ECOFAST)
<b>WIDTH</b>	139cm / 54.7ins
<b>REPEAT</b>	29.5cm / 11.6ins
<b>PATTERN MATCH</b>	Straight Match
<b>DOMESTIC USAGE</b>	Upholstery, Drapes, Blinds, Cushions
<b>CONTRACT USAGE</b>	Upholstery



## SWEET BAY

Multidirectional branches sway and hang slightly overlapping. Sweet Bay began life as a hand-painted artwork in gouache and pen. Its large scale and rhythmic marks are perfectly imperfect across the bay leaves, made contemporary in simple colourways. Become lost in the wilderness of this design.

[CLICK ON THE PRODUCT IMAGES TO DISCOVER MORE](#)

# SWEET BAY

WALLPAPER



SWEET BAY 113268



SWEET BAY 113269



SWEET BAY 113270

<b>TYPE</b>	Wallpaper
<b>COMPOSITION</b>	130GSM Non-woven
<b>WIDTH</b>	52.0cm / 20.5ins
<b>REPEAT</b>	61.1cm / 24.1ins
<b>PATTERN MATCH</b>	Straight Match

FABRIC



SWEET BAY 121313



SWEET BAY 121314

<b>TYPE</b>	Drapery
<b>COMPOSITION</b>	90% COTTON 10% LINEN (ECOFAST)
<b>WIDTH</b>	141cm / 55.5ins
<b>REPEAT</b>	40.0cm / 15.7ins
<b>PATTERN MATCH</b>	Straight Match
<b>DOMESTIC USAGE</b>	Upholstery, Drapes, Blinds, Cushions
<b>CONTRACT USAGE</b>	Upholstery



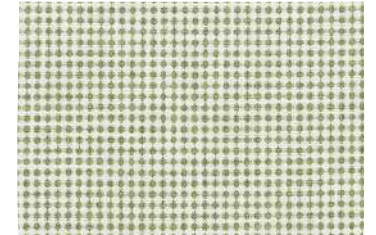
## SWITHLAND

A rik rak within a trellis shape, Swithland is a geometric design with a playful edge. The soft edges of the design created a quilted look – cosy and liveable.



SWITHLAND

134667



RAGDALE

134637



OAKHAM

134662

CLICK ON THE PRODUCT IMAGES TO DISCOVER MORE

# SWITHLAND

WALLPAPER



SWITHLAND 113245



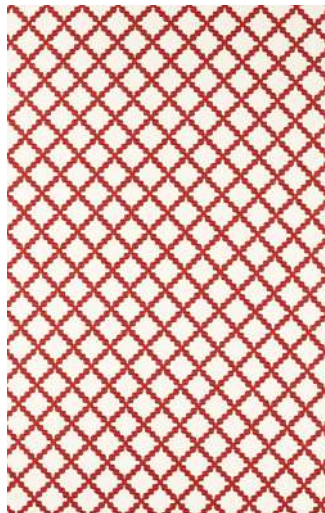
SWITHLAND 113246



SWITHLAND 113247

<b>TYPE</b>	Wallpaper
<b>COMPOSITION</b>	130GSM Non-woven
<b>WIDTH</b>	52.0cm / 20.5ins
<b>REPEAT</b>	64.8cm / 25.5ins
<b>PATTERN MATCH</b>	Straight Match

FABRIC



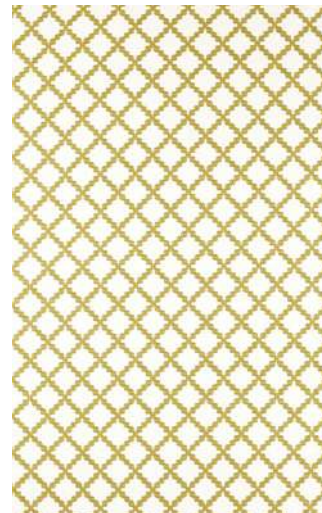
SWITHLAND 134666



SWITHLAND 134667



SWITHLAND 134668



SWITHLAND 134669

<b>TYPE</b>	Drapery
<b>COMPOSITION</b>	83% COTTON, 17% POLYESTER
<b>WIDTH</b>	136cm / 53.5ins
<b>REPEAT</b>	12.0cm / 4.7ins
<b>PATTERN MATCH</b>	Straight Match
<b>DOMESTIC USAGE</b>	Drapes, Blinds, Cushions
<b>CONTRACT USAGE</b>	Drapes



## TAIMI

Taimi is a play on a spot and a stripe combined. Retro and witty in its slight irregularity, the fabric has a dry handle and melange feel.

[CLICK ON THE PRODUCT IMAGES TO DISCOVER MORE](#)

# TAIMI

WEAVES



TAIMI 134647



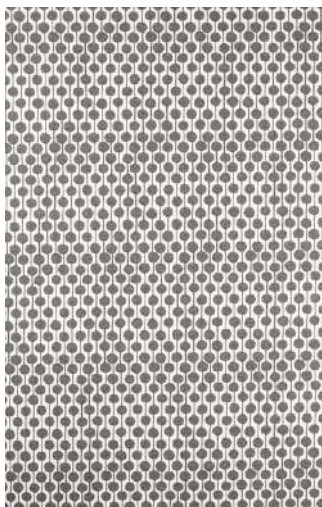
TAIMI 134648



TAIMI 134649



TAIMI 134650



TAIMI 134651

<b>TYPE</b>	Weave
<b>COMPOSITION</b>	90% POLYESTER, 10% COTTON
<b>WIDTH</b>	141cm / 55.5ins
<b>REPEAT</b>	41.0cm / 16.1ins
<b>PATTERN MATCH</b>	Straight Match
<b>DOMESTIC USAGE</b>	Upholstery, Drapes, Blinds, Cushions
<b>CONTRACT USAGE</b>	Drapes



## TULIP TRELLIS

Sapling's grown-up sister, Tulip Trellis, shows the blooms that spring from the tiniest seeds. A geometric floral painted in the studio, matching tulips charm in pops of colour for a little added whimsy.

[CLICK ON THE PRODUCT IMAGES TO DISCOVER MORE](#)

# TULIP TRELLIS

WALLPAPER



TULIP TRELLIS 113255



TULIP TRELLIS 113256



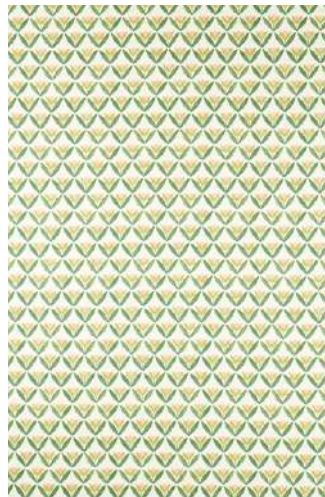
TULIP TRELLIS 113257

<b>TYPE</b>	Wallpaper
<b>COMPOSITION</b>	130GSM Non-woven
<b>WIDTH</b>	52.0cm / 20.5ins
<b>REPEAT</b>	49.6cm / 19.5ins
<b>PATTERN MATCH</b>	Straight Match

FABRIC



TULIP TRELLIS 121329



TULIP TRELLIS 121330

<b>TYPE</b>	Drapery
<b>COMPOSITION</b>	90% COTTON 10% LINEN (ECOFAST)
<b>WIDTH</b>	140.5cm / 55.3ins
<b>REPEAT</b>	24.5cm / 19.6ins
<b>PATTERN MATCH</b>	Straight Match
<b>DOMESTIC USAGE</b>	Upholstery, Drapes, Blinds, Cushions
<b>CONTRACT USAGE</b>	Upholstery



## TWYCROSS

Twycross brings a sense of adventure and characterful charm to interiors. Its interlocking pattern of geometrically inspired, stylised, and playful animals sparks nostalgic memories of trips to the zoo. This design was painted in the studio in ink to echo a watercolour technique.



TWYCROSS

134653



MATCHSTICKS

134629



TWYCROSS

113290

[CLICK ON THE PRODUCT IMAGES TO DISCOVER MORE](#)

# TWYXCROSS

## WALLPAPER



TWYXCROSS

113288



TWYXCROSS

113289



TWYXCROSS

113290

<b>TYPE</b>	Wallpaper
<b>COMPOSITION</b>	130GSM Non-woven
<b>WIDTH</b>	52.0cm / 20.5ins
<b>REPEAT</b>	52.0cm / 20.5ins
<b>PATTERN MATCH</b>	Straight Match

## WEAVES



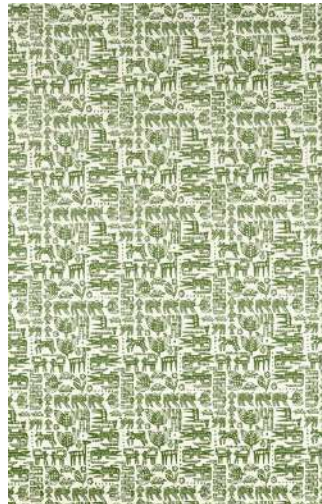
TWYXCROSS

134652



TWYXCROSS

134653



TWYXCROSS

134654



TWYXCROSS

134655

<b>TYPE</b>	Weave
<b>COMPOSITION</b>	90% POLYESTER,10% COTTON
<b>WIDTH</b>	141cm / 55.5ins
<b>REPEAT</b>	35.5cm / 14ins
<b>PATTERN MATCH</b>	Straight Match
<b>DOMESTIC USAGE</b>	Upholstery, Drapes, Blinds, Cushions
<b>CONTRACT USAGE</b>	Drapes

# WALLPAPER INDEX



BIMBLE 113248



BIMBLE 113249



BIMBLE 113250



BIMBLE 113251



BRADGATE 113258



BRADGATE 113259



BRADGATE 113260



CANTER 113252



CANTER 113253



CANTER 113254



DANCING DAISIES 113282



DANCING DAISIES 113283



DANCING DAISIES 113284



FALLING FOSS 113264



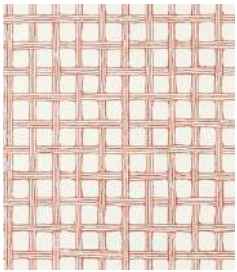
FALLING FOSS 113265



FALLING FOSS 113266



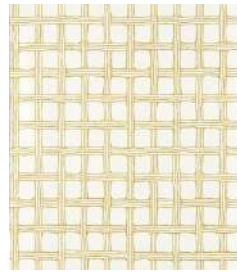
FALLING FOSS 113267



FRETWORK 113261



FRETWORK 113262



FRETWORK 113263



KASURI 113271



KASURI 113272



KASURI 113273



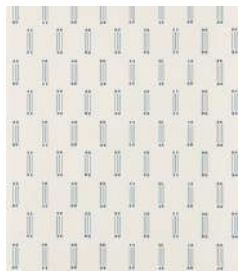
MATCHSTICKS 113278



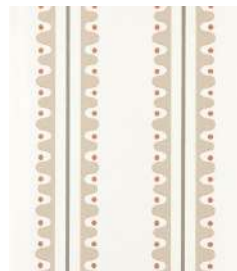
MATCHSTICKS 113279



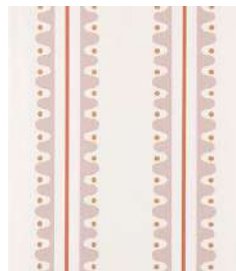
MATCHSTICKS 113280



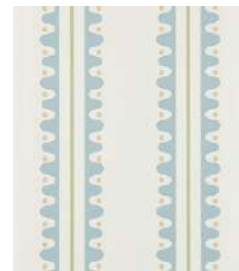
MATCHSTICKS 113281



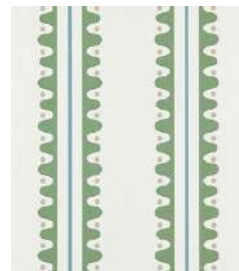
OAKHAM 113237



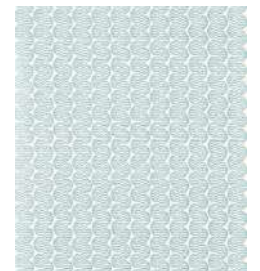
OAKHAM 113238



OAKHAM 113239

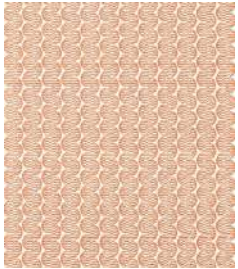


OAKHAM 113240



RAFT STRIPE 113241

# WALLPAPER CONTINUED



RAFT STRIPE 113242



RAFT STRIPE 113243



RAFT STRIPE 113244



SAPLING 113274



SAPLING 113275



SAPLING 113276



SAPLING 113277



SPLIT PEA 113285



SPLIT PEA 113286



SPLIT PEA 113287



SWEET BAY 113268



SWEET BAY 113269



SWEET BAY 113270



SWITHLAND 113245



SWITHLAND 113246



SWITHLAND 113247



TULIP TRELLIS 113255



TULIP TRELLIS 113256



TULIP TRELLIS 113257



TWYCROSS 113288



TWYCROSS 113289

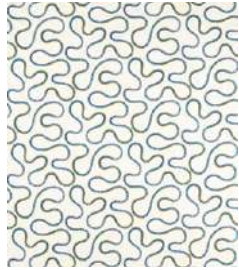


TWYCROSS 113290

# FABRIC INDEX



BIMBLE 134670



BIMBLE 134671



BIMBLE 134672



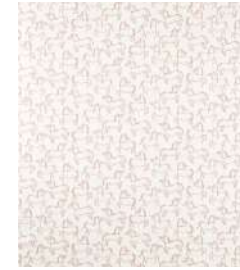
BIMBLE 134673



CANTER 121318



CANTER 121319



CANTER 121320



DANCING DAISIES 121331



DANCING DAISIES 121332



DANCING DAISIES 121333



DUCKWEED 134625



DUCKWEED 134626



DUCKWEED 134627



FALLING FOSS 134678



FALLING FOSS 134679



FALLING FOSS 134680



FRINGED POPPY 121334



FRINGED POPPY 121335



FRETWORK 121321



FRETWORK 121322



FRETWORK 121323



HAYLOFT 134674



HAYLOFT 134675



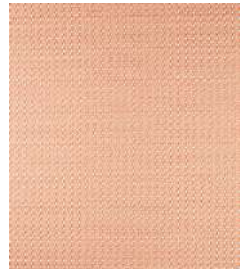
HAYLOFT 134676



HAYLOFT 134677



RAFT STRIPE 121324



RAFT STRIPE 121325



RAFT STRIPE 121326



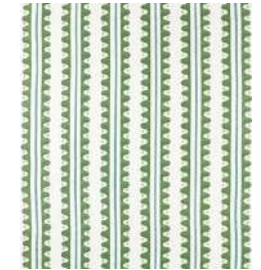
RAFT STRIPE 121327



RAFT STRIPE 121328

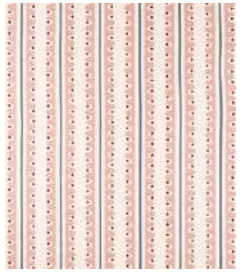


OAKHAM 134661



OAKHAM 134662

# FABRIC CONTINUED



OAKHAM 134663



OAKHAM 134664



OAKHAM 134665



SPLIT PEA 121315



SPLIT PEA 121316



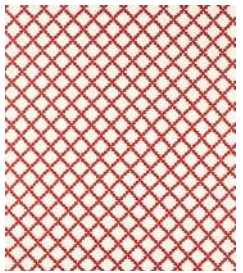
SPLIT PEA 121317



SWEET BAY 121313



SWEET BAY 121314



SWITLAND 134666



SWITLAND 134667



SWITLAND 134668



SWITLAND 134669



TULIP TRELLIS 121329



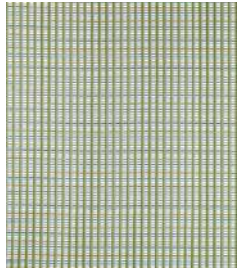
TULIP TRELLIS 121330



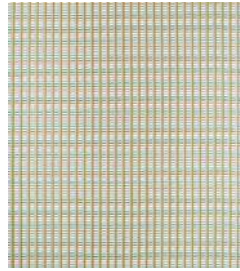
# WEAVE INDEX



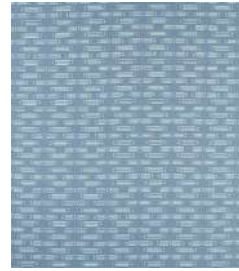
CHARNWOOD 134641



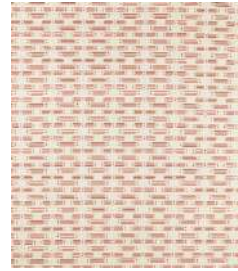
CHARNWOOD 134642



CHARNWOOD 134643



MATCHSTICKS 134628



MATCHSTICKS 134629



MATCHSTICKS 134630



MATCHSTICKS 134631



MELTON STRIPE 134644



MELTON STRIPE 134645



MELTON STRIPE 134646



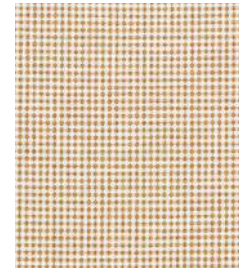
RAGDALE 134636



RAGDALE 134637



RAGDALE 134638



RAGDALE 134639



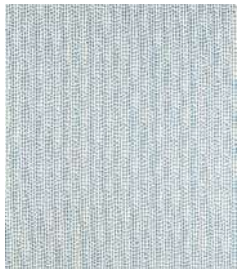
RAGDALE 134640



SORREL 134656



SORREL 134657



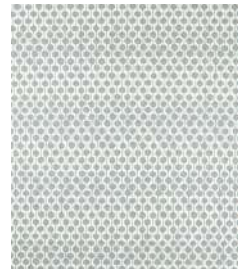
SORREL 134658



SORREL 134659



SORREL 134660



TAIMI 134647



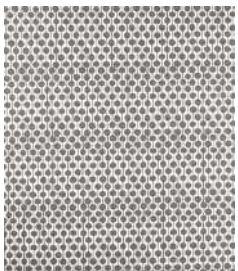
TAIMI 134648



TAIMI 134649



TAIMI 134650



TAIMI 134651



TWYXCROSS 134652



TWYXCROSS 134653



TWYXCROSS 134654



TWYXCROSS 134655

# scion

## CONTACT PAGE

### PRESS OFFICE DETAILS

[press@sandersondesigngroup.com](mailto:press@sandersondesigngroup.com)

### SHOWROOM

Sanderson Design Group  
Unit 23G, Ground Floor, Central Dome,  
Chelsea Harbour Design Centre  
SW10 0XE, London

### HEAD OFFICE

Voysey House, Sandersons Lane,  
London, W4 4DS

### KRAVET PRESS

[press@kravet.com](mailto:press@kravet.com)

[scionliving.com](http://scionliving.com) @scion\_living

