



CLARKE & CLARKE

JAIPUR CHENILLE

DIGITAL DESIGN BOOK





# CLARKE & CLARKE

## JAIPUR CHENILLE

---

**Inspired by the vibrant textile industry of India, Jaipur brings a contemporary twist to traditional chenille fabric.**

---

Available in 40 diverse shades, from soft neutrals to deep, saturated hues, this versatile fabric is perfect for both drapes and upholstery. With a 25,000 Martindale rating, Jaipur offers durability while retaining its distinctive, super soft and relaxed handle. This naturally textured finish is created using 46% recycled polyester and 5% linen, for a fabric that carries a lower impact on the environment.

Versatile and relaxed with an extensive colour line, Jaipur's chenille finish is sure to be a well-loved fabric in the portfolio.

Designed to complement the Indira collection's Indian block print-inspired designs, Jaipur seamlessly blends into spaces that celebrate tradition and modernity. Featuring a mix of muted naturals and bolder, rich tones like blues, reds, and burnt hues, Jaipur adds depth and texture, reflecting the timeless spirit of global textile designs.

[clarke-clarke.sandersondesigngroup.com](https://clarke-clarke.sandersondesigngroup.com)

[@clarke\\_clarke\\_interiors](https://www.instagram.com/clarke_clarke_interiors)



---

## JAIPUR CHENILLE

---

A versatile chenille with a super soft, dry handle and natural textured feel, Jaipur is available in 40 shades spanning soft neutrals to rich, saturated tones. With a 25,000 Martindale rating, it's suitable for both drapes and upholstery, designed to coordinate with the Indira collection of Indian block print-inspired designs.

---

### TECHNICAL SPECIFICATIONS

---

TYPE	Chenille
COMPOSITION	49% Polyester, 46% Recycled Polyester, 5% Linen
WIDTH	137cm/53.9in
REPEAT	N/A
DOMESTIC USAGE	Curtains, Blinds, Cushions, Upholstery
CONTRACT USAGE	Curtains





---

## JAIPUR CHENILLE

---



LINEN F1806/19



OTTER F1806/26



ESPRESSO F1806/13



SHINGLE F1806/34



PUTTY F1806/29



FOSSIL F1806/15



BARK F1806/03



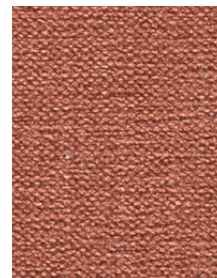
TAUPE F1806/39



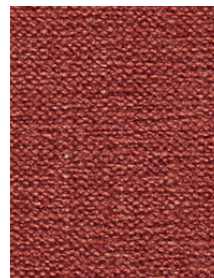
CAMEL F1806/06



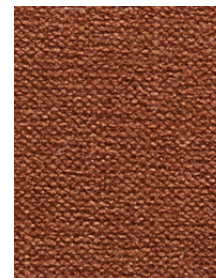
ANTIQUE F1806/02



SPICE F1806/36



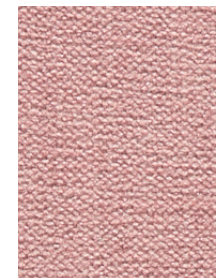
RUSSET F1806/32



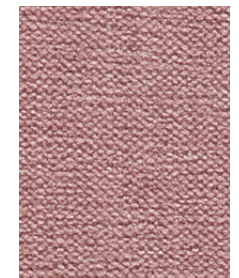
CINNAMON F1806/09



RUBY F1806/31



BLUSH F1806/05



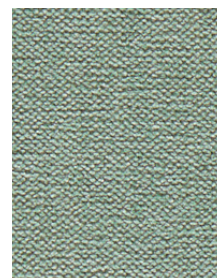
ROSE F1806/30



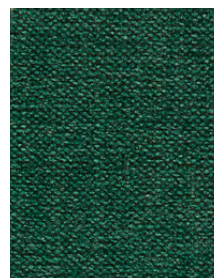
MOSS F1806/22



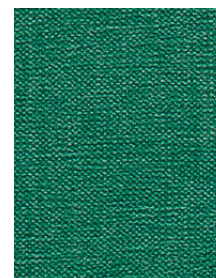
HERB F1806/16



CELADON F1806/07



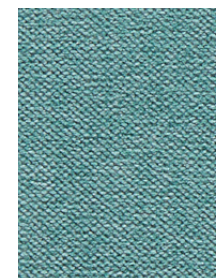
FOREST F1806/14



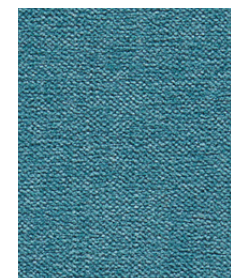
EMERALD F1806/12



SURF F1806/38



MINERAL F1806/21



OCEAN F1806/25

[Click on the product images to discover more.](#)



---

## JAIPUR CHENILLE

---



TEAL F1806/40



AEGEAN F1806/01



DENIM F1806/11



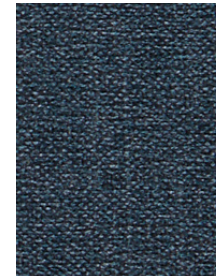
MIDNIGHT F1806/20



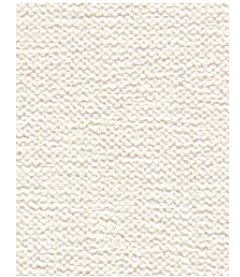
COBALT F1806/10



INK F1806/17



NAVY F1806/23



IVORY F1806/18



PARCHMENT F1806/27



PEBBLE F1806/28



BIRCH F1806/04



SILVER F1806/35



SHALE F1806/33



STORM F1806/37



CHARCOAL F1806/08



NOIR F1806/24

[Click on the product images to discover more.](#)



## CONTACT US

---

### LONDON SHOWROOM – NEW

Sanderson Design Group  
Unit 23G, Ground Floor, Central Dome,  
Chelsea Harbour Design Centre  
SW10 0XE, London  
[showroom@sandersondesigngroup.com](mailto:showroom@sandersondesigngroup.com)

### USA – KRAVET PRESS

[press@kravet.com](mailto:press@kravet.com)

### GERMANY SHOWROOM

Kronenstrasse 4, 76133 Karlsruhe  
+49 721 981 985 60  
[verkauf@sandersondesigngroup.com](mailto:verkauf@sandersondesigngroup.com)

### NETHERLANDS SHOWROOM

ETC Licht & Interieur, Randweg 20,  
4104 AC Culemborg  
+31 65349 3696  
[international@sandersondesigngroup.com](mailto:international@sandersondesigngroup.com)

## ABOUT CLARKE & CLARKE

---

Founded in 2009 as the go-to design house defining transitional style in home interiors, Clarke & Clarke offers an eclectic yet distinctive collection of fabrics, wallpapers and home accessories. Born out of a passion for creating beautiful, expressive homes, Clarke & Clarke's spirit and British flair deliver an inclusive sense of glamour for the style conscious. Focusing on luxurious textures and bold colour combinations, Clarke & Clarke's aesthetic runs from whimsical to glamorous and maximalist to sleek, for polished looks embodying British eclecticism.

[clarke-clarke.sandersondesigngroup.com](mailto:clarke-clarke.sandersondesigngroup.com)

[@clarke\\_clarke\\_interiors](#)