

THE ORIGINAL  
**MORRIS & Co**

FOUNDED BY WILLIAM MORRIS IN 1861

INDOOR OUTDOOR WEAVES

DIGITAL DESIGN BOOK





INDOOR OUTDOOR WEAVES

## Introduction

---

Tracing back to a design past that began with the wonder of the English garden in plain sight, Morris & Co. continues its commitment to its founder's principles with Indoor Outdoor Weaves, a densely woven collection of outdoor fabrics for SS25.

Layered in heritage and woven with a deep connection to the history of these designs, rambling, weaving and twisting foliage and flowers come to light, celebrating the enduring appeal of the Arts & Crafts movement.

"Indoor Outdoor Weaves feels a long time in the making. Crafting a collection made specifically for indoor and outdoor settings is a natural progression for us as a design studio, honouring the original point of reference that inspired so much of William Morris's iconic work. Take the beloved Blackthorn, which has never been woven before – now, it makes its debut for this collection as a weave, which feels very special. These heritage designs sit, resplendent in outdoor settings, walking the path Morris once took." Jess Clayworth, Lead Designer at Morris & Co.

New designs join heritage icons such as Blackthorn and Acorn. For the first time, Hammersmith Woven Stripe has been designed for the indoors and outdoors, taking inspiration from a carpet designed by Morris. In addition to these glorious homages, Amble completes the collection—a wondrous plain with a density of colour and abundant texture for layering in schemes.

Each design is treated with a water-repellent and stain-resistant finish, perfect for gardens, terraces, patios and poolsides. These new weaves from Morris & Co. are naturally at home indoors and out.

A collection entirely new for outdoor settings, Indoor Outdoor Weaves takes each design back to its roots along the garden path.





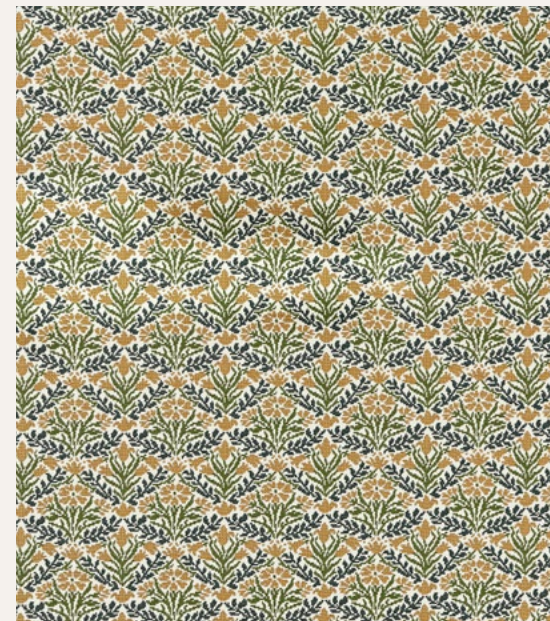


## Bellflowers Weave

---

Originally a best-selling carpet design from 1875-1880, this indoor outdoor weave depicts those perfectly proportioned bellflowers in a new, slightly larger scale. The tapestry quality shows a box technique in the weave, giving a distinct, almost cross-stitch design.

[CLICK ON THE PRODUCT IMAGE TO DISCOVER MORE](#)



BELLFLOWERS WEAWE

237560

---

INDOOR OUTDOOR WEAVES



## Elmcote Weave

---

This magnificently brooding 1900 design from J.H. Dearle portrays gallant seedheads and miniature flowers connected by swirling foliage. The arrangement is classically Dearle in style, originally a woollen weave. The flow and boldness of the design perfectly suit the box weaving technique.

[CLICK ON THE PRODUCT IMAGE TO DISCOVER MORE](#)



ELMCOTE WEAVE

237562

---

INDOOR OUTDOOR WEAVES







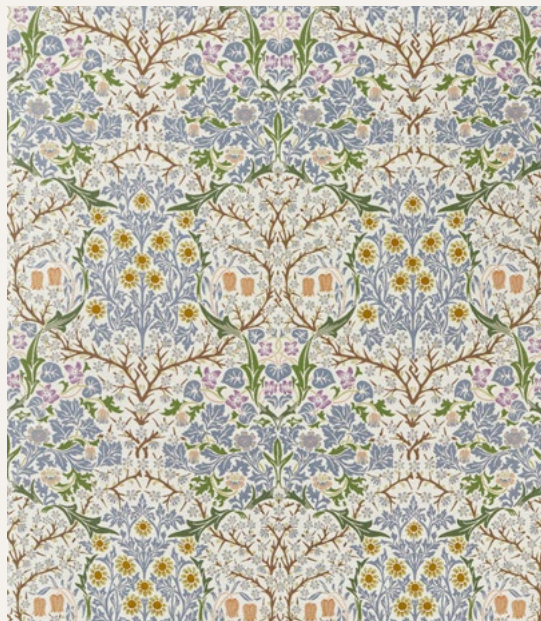


# Blackthorn Weave

---

Blackthorn, designed for wallpaper by J.H. Dearle in 1892, was first adapted for machine-printed fabric in 1975 by Sanderson. Now, Blackthorn Weave depicts a richly woven design for indoors and out. The weave texture, intricate and piquing interest, plays with differing levels of colour. The ribbed quality in the flowerheads adds texture to the blooms, and variation between floral display and calming leaves. Rich, archival colours meet soft, hazy hues.

[CLICK ON THE PRODUCT IMAGE TO DISCOVER MORE](#)



BLACKTHORN WEAVE

237558

---

INDOOR OUTDOOR WEAVES







## Thistle Weave

---

First designed as a wallpaper in 1896, this Morris & Co. weave displays the same distinctive thistle motif. Twisted yarn colours add depth and character to the design, a technique that works well across the simple thistle leaf.

[CLICK ON THE PRODUCT IMAGE TO DISCOVER MORE](#)



THISTLE WEAVE

237574

---

INDOOR OUTDOOR WEAVES





ACORN WEAVE 237569



ACORN WEAVE 237570



ACORN WEAVE 237571



AMBLE 237585



AMBLE 237586



AMBLE 237587



AMBLE 237588



AMBLE 237589



AMBLE 237590



AMBLE 237591



AMBLE 237592



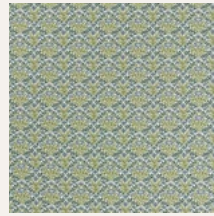
AMBLE 237593



AMBLE 237594



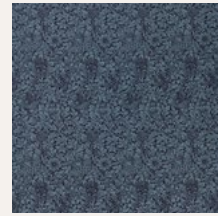
AMBLE 237595



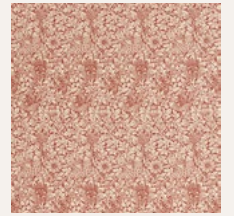
BELLFLOWERS WEAVE 237559



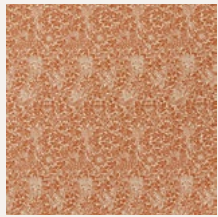
BELLFLOWERS WEAVE 237560



BIRD & ANEMONE WEAVE 237579



BIRD & ANEMONE WEAVE 237580



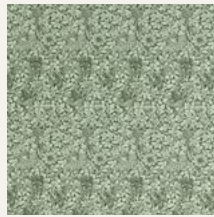
BIRD & ANEMONE WEAVE 237581



BIRD & ANEMONE WEAVE 237582



BIRD & ANEMONE WEAVE 237583



BIRD & ANEMONE WEAVE 237584



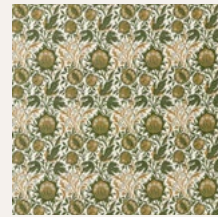
BLACKTHORN WEAVE 237556



BLACKTHORN WEAVE 237557



BLACKTHORN WEAVE 237558



ELMCOTE WEAVE 237562



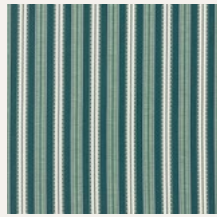
ELMCOTE WEAVE 237563



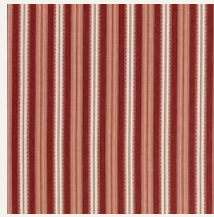
ELMCOTE WEAVE 237564



HAMMERSMITH WOVEN STRIPE 237576



HAMMERSMITH WOVEN STRIPE 237577



HAMMERSMITH WOVEN STRIPE 237578



THISTLE WEAVE 237572



THISTLE WEAVE 237573



THISTLE WEAVE 237574



THISTLE WEAVE 237575



WARDLE WEAVE 237566



WARDLE WEAVE 237567



WARDLE WEAVE 237568



## Contact Us

---

### LONDON SHOWROOM / NEW

Unit 23G, Ground Floor, Central Dome,

Chelsea Harbour Design Centre

Tel: + 44 203 903 3700

Email: [showroom@sandersondesigngroup.com](mailto:showroom@sandersondesigngroup.com)

### NEW YORK SHOWROOM

Suite 905 D&D Building, 979 Third Avenue

New York, NY 10022

Tel +1 212 319 7220

Email: [USAsales@sandersondesigngroup.com](mailto:USAsales@sandersondesigngroup.com)

### CHICAGO SHOWROOM

222 W Merchandise Mart Plaza,

Suite 6-117A, Chicago, IL 60654

Tel +1 312 929 2058

Email: [USAsales@sandersondesigngroup.com](mailto:USAsales@sandersondesigngroup.com)

### NETHERLANDS SHOWROOM

ETC Licht & Interieur, Randweg 20,

4104 AC Culemborg

Tel: +31 65349 3696

Email: [international@sandersondesigngroup.com](mailto:international@sandersondesigngroup.com)

### GERMANY SHOWROOM

Kronenstrasse 4, 76133 Karlsruhe

Tel: +49 721 981 985 60

Email: [verkauf@sandersondesigngroup.com](mailto:verkauf@sandersondesigngroup.com)

[wmorrisandco.com](http://wmorrisandco.com) | [@wmorrisandco](https://www.instagram.com/wmorrisandco)

